

Schleuniger Tooling

EcoStrip 9320, OmniStrip 9400, OmniStrip 9450, MultiStrip 9480 & PowerStrip 9500

Used In These Machines

Schleuniger
EcoStrip 9320
OmniStrip 9400
OmniStrip 9450
MultiStrip 9480
PowerStrip 9500

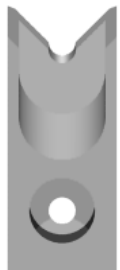
The Schleuniger EcoStrip 9320, OmniStrip 9400, OmniStrip 9450, MultiStrip 9480 & PowerStrip 9500 Series Machines use a single set of "Universal" Stripping Blades to remove the insulation from the end of a wire. Several of the machines are also capable of using multiple blade sets for more complex processing. Mechtrix blades for these Schleuniger Machines are made to precision standards from a specially selected tool steel or tungsten carbide to insure optimum performance and blade life. The blades for these Schleuniger Machines come in two standard widths (16mm for 1 or 2 position operation) and (10.6mm for 3 position operation). Wider blades are also available for multi-conductor and other special applications.

In addition to the "Universal" Stripping Blades, Mechtrix also offers both our patented M-Series and Full Radius stripping form geometries for processing difficult insulations in these machines. Please contact Mechtrix for assistance in selecting the appropriate style and size blade for your specific application.



Schleuniger EcoStrip 9320, OmniStrip 9400, OmniStrip 9450, MultiStrip 9480 and Power Strip 9500 Universal Blades (16mm)

Mechtrix Description	Mechtrix Part Number	Blade Form Diameter		OEM Part Number
		(in)	(mm)	
Schleuniger S95S Universal-Short - Tool Steel	19428	-	-	301.9056 or PSP-401.9008
Schleuniger S95L Universal-Long - Tool Steel	19426	-	-	
Schleuniger S95S Universal-Short - Carbide	27649-500	-	-	PSP-401.9017
Schleuniger S95L Universal-Long - Carbide	27649	-	-	
Schleuniger S95-MCR-S Universal-Short	27616	-	-	-
Schleuniger S95-MCR-L Universal-Long	27615	-	-	-



Schleuniger EcoStrip 9320, OmniStrip 9400, OmniStrip 9450, MultiStrip 9480 and Power Strip 9500 M-Series Blades (16mm)

Mechtrix Description	Mechtrix Part Number	Blade Form Diameter		OEM Part Number
		(in)	(mm)	
M-Series Blades are available in 0.1mm increments in the following sizes: S95M-0.3 thru S95M-12.0 Long and Short	-	-	-	-



Schleuniger EcoStrip 9320, OmniStrip 9400, OmniStrip 9450, MultiStrip 9480 and Power Strip 9500 Full Radius Blades (16mm)

Mechtrix Description	Mechtrix Part Number	Blade Form Diameter		OEM Part Number
		(in)	(mm)	
Full Radius Blades are available in 0.1mm increments in the following sizes: S95-0.4D thru S95-12.0D Long and Short	-	-	-	PSP-401.9500 to PSP.401.9600

A set of blades for the EcoStrip 9320, OmniStrip 9400, OmniStrip 9450, MultiStrip 9480 & PowerStrip 9500 consists of at least one (L) long stripping blade with a thru hole and one (S) short stripping blade with a tapped hole. Some of these machines are capable of accepting multiple blade sets.

Schleuniger PS-9500 Pre-Slit Blade

Mechtrix Description	Mechtrix Part Number	Blade Form Diameter		OEM Part Number
		(in)	(mm)	
Schleuniger S95 Pre-Slit Blade	30287	-	-	PSP-402959

Mechtrix M-Series Stripping Blades are protected by U.S. Patent 4,630,406 and U.S. Patent 4,577,405



Mechtrix Corporation • W147 N9461 Held Drive • Menomonee Falls, WI 53051
Tel (262) 255-6555 • Fax (262) 255-2628 • www.mechtrix.com

Schleuniger Tooling

EcoStrip 9320, OmniStrip 9400, OmniStrip 9450, MultiStrip 9480 & PowerStrip 9500

Used In These Machines

The Schleuniger EcoStrip 9320, OmniStrip 9400, OmniStrip 9450, MultiStrip 9480 & PowerStrip 9500 Series blades listed below are for use when 3 blade positions are required to perform more complex stripping operations. The geometries shown below are just a few of the standard types available. Many other design possibilities are possible.

Please contact Mechtrix for assistance in selecting the appropriate style and size blade for your particular application.



Schleuniger EcoStrip 9320, OmniStrip 9400, OmniStrip 9450, MultiStrip 9480 and Power Strip 9500 Universal Blades (10.6mm)

Mechtrix Description	Mechtrix Part Number	Blade Form Diameter		OEM Part Number
		(in)	(mm)	
Schleuniger S95PNS Universal-Short - Tool Steel	27045-01	-	-	PSP-401.9010
Schleuniger S95PNL Universal-Long - Tool Steel	27044-01	-	-	



Schleuniger EcoStrip 9320, OmniStrip 9400, OmniStrip 9450, MultiStrip 9480 and Power Strip 9500 M-Series Blades (10.6mm)

Mechtrix Description	Mechtrix Part Number	Blade Form Diameter		OEM Part Number
		(in)	(mm)	
M-Series Blades are available in 0.1mm increments in the following sizes: S95NM-0.3 thru S95NM-7.0 Long and Short	-	-	-	-



Schleuniger EcoStrip 9320, OmniStrip 9400, OmniStrip 9450, MultiStrip 9480 and Power Strip 9500 Full Radius Blades (10.6mm)

Mechtrix Description	Mechtrix Part Number	Blade Form Diameter		OEM Part Number
		(in)	(mm)	
Full Radius Blades are available in 0.1mm increments in the following sizes: S95N-0.4D thru S95N-7.0D Long and Short	-	-	-	PSP-401.9602 to PSP.401.9678



Schleuniger PS-9500 MX Rotary Stripping Blades

Mechtrix Description	Mechtrix Part Number	Blade Form Diameter		OEM Part Number
		(in)	(mm)	
Schleuniger PS-9500 MX Rotary Strip Blades	31213-02-CT1	-	-	404239

PS-9500 MX

In addition to the standard stripping blades used in the PS-9500 Machine, the PS-9500 MX also uses (2) PS-9500 MX Rotary Stripping Blades.

PS-9500 PS

This machine can remove the jacket from a round cable and then strip the individual inner conductors. The indexing and orientation device that accomplishes this operation requires blades that are 2mm thick. When ordering blades for the PS-9500 PS be sure to indicate this to Mechtrix.

PS-9500 RS and PS-9500 RSL

In addition to the standard stripping blades used in the PS-9500 Machine, the PS-9500 RS and PS-9500 RSL also use (2) CA-9170 Rotary Stripping Blades. (Please see the CA-9170 Catalog Page)