

Schleuniger Tooling

Schleuniger MegaStrip 9600

Used In These
Machines

Schleuniger
MS-9600

The Schleuniger MegaStrip 9600 Machines can use one, two or three sets of stripping blades to remove the insulation from the end of a wire. Mechtrix blades for the Schleuniger MegaStrip 9600 are made to precision standards from a specially selected tool steel to insure optimum performance and blade life.

In addition to the "Universal" Stripping Blades, Mechtrix also offers both our patented M-Series and Full Radius stripping form geometries for processing difficult insulations in the MegaStrip 9600. Please contact Mechtrix for assistance in selecting the appropriate style and size blade for your particular application.



Schleuniger MS-9600 Universal Blades (20mm)

Mechtrix Description	Mechtrix Part Number	Blade Form Diameter		OEM Part Number
		(in)	(mm)	
S96US-20W Universal-Short (1-14mm cable ø)	26259	-	-	402764
S96UL-20W Universal-Long (1-14mm cable ø)	26258			



Schleuniger MS-9600 M-Series Blades (20mm)

Mechtrix Description	Mechtrix Part Number	Blade Form Diameter		OEM Part Number
		(in)	(mm)	
M-Series Blades are available in 0.1mm increments in the following sizes: S96M-0.3-20 thru S96M-13.0-20 Long and Short	-	-	-	-



Schleuniger MS-9600 Full Radius Blades (20mm)

Mechtrix Description	Mechtrix Part Number	Blade Form Diameter		OEM Part Number
		(in)	(mm)	
Full Radius Blades are available in 0.1mm increments in the following sizes: S96-0.4D-20 thru S96-13.0D-20 Long and Short	-	-	-	402865 to 402887

A set of blades for the Schleuniger MS-9600 consists of at least one (L) long stripping blade with a thru hole and one (S) short stripping blade with a tapped hole.



Schleuniger MS-9600 Slit Blade

Mechtrix Description	Mechtrix Part Number	Blade Form Diameter		OEM Part Number
		(in)	(mm)	
Schleuniger S96 Slit Blade - Tool Steel	26977	-	-	401722

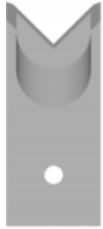


Schleuniger RU-9600 Rotary Unit

Mechtrix Description	Mechtrix Part Number	Blade Form Diameter		OEM Part Number
		(in)	(mm)	
Schleuniger S96RU Rotary Strip Blade - Tool Steel	29941-CT1	-	-	404210
Schleuniger S96RU Rotary Strip Blade - Carbide	29960-CT1	-	-	404212

Schleuniger Tooling

Schleuniger MegaStrip 9600 (cont.)



Schleuniger MS-9600 Universal Blades (28mm)

Mechtrix Description	Mechtrix Part Number	Blade Form Diameter		OEM Part Number
		(in)	(mm)	
S96US-28W Universal-Short (1-20mm cable \emptyset)	26261	-	-	402765
S96UL-28W Universal-Long (1-20mm cable \emptyset)	26260			
S96U-3.0RS-28W Short (6-20mm cable \emptyset)	26042	0.236	6.0	402767
S96U-3.0RL-28W Long (6-20mm cable \emptyset)	26041			



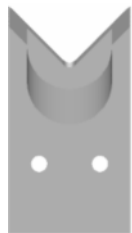
Schleuniger MS-9600 M-Series Blades (28mm)

Mechtrix Description	Mechtrix Part Number	Blade Form Diameter		OEM Part Number
		(in)	(mm)	
M-Series Blades are available in 0.1mm increments in the following sizes: S96M-0.3-28 thru S96M-19.0-28 Long and Short	-	-	-	-



Schleuniger MS-9600 Full Radius Blades (28mm)

Mechtrix Description	Mechtrix Part Number	Blade Form Diameter		OEM Part Number
		(in)	(mm)	
Full Radius Blades are available in 0.1mm increments in the following sizes: S96-0.4D-28 thru S96-19.0D-28 Long and Short	-	-	-	402836 to 402864



Schleuniger MS-9600 Universal Blades (40mm)

Mechtrix Description	Mechtrix Part Number	Blade Form Diameter		OEM Part Number
		(in)	(mm)	
S96US-40W Universal-Short (1-25.4mm cable \emptyset)	26263	-	-	402766
S96UL-40W Universal-Long (1-25.4mm cable \emptyset)	26262			
S96U-3.0RS-40W Short (6-25.4mm cable \emptyset)	26265	0.236	6.0	402768
S96U-3.0RL-40W Long (6-25.4mm cable \emptyset)	26264			



Schleuniger MS-9600 M-Series Blades (40mm)

Mechtrix Description	Mechtrix Part Number	Blade Form Diameter		OEM Part Number
		(in)	(mm)	
M-Series Blades are available in 0.1mm increments in the following sizes: S96M-0.3-40 thru S96M-24.0-40 Long and Short	-	-	-	-



Schleuniger MS-9600 Full Radius Blades (40mm)

Mechtrix Description	Mechtrix Part Number	Blade Form Diameter		OEM Part Number
		(in)	(mm)	
Full Radius Blades are available in 0.1mm increments in the following sizes: S96-0.4D-40 thru S96-24.0D-40 Long and Short	-	-	-	402801 to 402835