

# Artos Tooling

## Mechtrix Single "V" Series Stripping Blades

### Used In These Machines

#### Artos

CS-6  
CS-9  
CS-10  
CS-11  
CS-15  
CS-18  
CS-20  
CS-20  
TA-20  
CS-21  
CS-23  
CS-27  
CS-30  
CS-33  
S-1

#### Amp

CLS (all)

#### Kut-Rite

MCS (all)  
BTS (all)

The Mechtrix Single "V" Stripping Blades are used when processing one wire at a time on machines manufactured by the Artos Engineering Company. "V" Series Stripping Blades are made to precision standards from a specially selected tool steel to insure optimum performance and blade life and are produced using state-of-the-art manufacturing techniques. "V" Series Stripping Blades have the Mechtrix patented feature of a cutting form which includes a perfectly formed cutting radius. The perfectly formed cutting radius insures optimum cutting of the insulation while the entry angle improves the blade's "gathering" characteristics, thus eliminating the need for wire guides.

"V" Series Stripping Blades are a "V-type" blade and offer several advantages over "die-type" blades. These advantages include adjustability over a range of conductor diameters (rather than being sized for only one conductor diameter as is a die-type blade), superior cutting and gathering ability, and longer blade life. Please contact Mechtrix for assistance in selecting the appropriate size blade for your particular application.

### Single "V" Tooling Setup

| No. | Part Description          | Qty. | No. | Part Description                  | Qty. |
|-----|---------------------------|------|-----|-----------------------------------|------|
| 1   | "V" Stripping Blade-Short | 2    | 5   | Artos 4" Toolholder               | 2    |
| 2   | "V" Stripping Blade-Long  | 2    | 6   | Mechtrix Endscrew/Washer Assembly | 4    |
| 3   | Cut-off Blade             | 2    | 7   |                                   |      |
| 4   | Spacers                   | -    | 8   |                                   |      |

Mechtrix "V" Series Stripping Blades are covered by U.S. Pat. 4,630,406



Mechtrix Corporation • W147 N9461 Held Drive • Menomonee Falls, WI 53051  
Tel (262) 255-6555 • Fax (262) 255-2628 • www.mechtrix.com

# Artos Tooling

## Mechtrix Single "V" Series Stripping Blades



### Mechtrix Single "V" Series Stripping Blades

| Mechtrix Description                           | Mechtrix Part Number | Blade Form Diameter |      | OEM Part Number |
|--|----------------------|---------------------|------|-----------------|
|  |                      | (in)                | (mm) |                 |
| V-012S Stripping Blade-Short                   | 12753                | 0.01200             | 0.30 | 86777-21        |
| V-012L Stripping Blade-Long                    | 12752                |                     |      | 86777-22        |
| V-022S Stripping Blade-Short                   | 12755                | 0.02200             | 0.56 | 86777-19        |
| V-022L Stripping Blade-Long                    | 12754                |                     |      | 86777-20        |
| V-034S Stripping Blade-Short (replaces V-32)   | 14218                | 0.03400             | 0.86 | 86777-1         |
| V-034L Stripping Blade-Long (replaces V-32L)   | 14219                |                     |      | 86777-2         |
| V-042S Stripping Blade-Short                   | 12757                | 0.04200             | 1.07 | 86777-3         |
| V-042L Stripping Blade-Long                    | 12756                |                     |      | 86777-4         |
| V-052S Stripping Blade-Short                   | 12759                | 0.05200             | 1.32 | 86777-5         |
| V-052L Stripping Blade-Long                    | 12758                |                     |      | 86777-6         |
| V-062S Stripping Blade-Short (replaces V-16)   | 14222                | 0.06200             | 1.57 | 86777-7         |
| V-062L Stripping Blade-Long (replaces V-16L)   | 14223                |                     |      | 86777-8         |
| V-076S Stripping Blade-Short                   | 12761                | 0.07600             | 1.93 | 86777-9         |
| V-076L Stripping Blade-Long                    | 12760                |                     |      | 86777-10        |
| V-096S Stripping Blade-Short (replaces V-332)  | 14220                | 0.09600             | 2.44 | 86777-11        |
| V-096L Stripping Blade-Long (replaces V-332L)  | 14221                |                     |      | 86777-12        |
| V-112S Stripping Blade-Short                   | 12725                | 0.11200             | 2.84 | 86777-13        |
| V-112L Stripping Blade-Long                    | 12724                |                     |      | 86777-14        |
| V-125S Stripping Blade-Short (replaces V-8)    | 00228                | 0.12500             | 3.18 | -               |
| V-125L Stripping Blade-Long (replaces V-8L)    | 00218                |                     |      | -               |
| V-156A Stripping Blade-Short (replaces V-532A) | 00230                | 0.15625             | 3.97 | -               |
| V-156L Stripping Blade-Long (replaces V-532L)  | 00219                |                     |      | -               |
| V-172A Stripping Blade-Short                   | 15925                | 0.17200             | 4.37 | 86777-15        |
| V-172L Stripping Blade-Long                    | 12762                |                     |      | 86777-16        |
| V-187A Stripping Blade-Short (replaces V-316A) | 00231                | 0.18750             | 4.76 | -               |
| V-187L Stripping Blade-Long (replaces V-316L)  | 00220                |                     |      | -               |
| V-222A Stripping Blade-Short (replaces V-732A) | 14224                | 0.22200             | 5.64 | 86777-17        |
| V-222L Stripping Blade-Long (replaces V-732L)  | 14225                |                     |      | 86777-18        |
| V-250A Stripping Blade-Short (replaces V-4A)   | 00232                | 0.25000             | 6.35 | -               |
| V-250L Stripping Blade-Long (replaces V-4L)    | 00221                |                     |      | -               |

### Mechtrix Single "V" Series Cut-Off Blades

| Mechtrix Description | Mechtrix Part Number | Blade Form Diameter |      | OEM Part Number |
|----------------------|----------------------|---------------------|------|-----------------|
|                      |                      | (in)                | (mm) |                 |
| MCL Cut-off Blade    | 01393                | -                   | -    | C-2681-09       |
| CL Cut-off Blade     | 00022                | -                   | -    | C-2681-02       |
| CLA Cut-off Blade    | 00024                | -                   | -    | C-2681-01       |

A set of "V" Series Blades consists of two (2) "V" Strip Blades-Short, two (2) "V" Strip Blades-Long and two (2) Cut-off Blades.

Mechtrix "V" Series Stripping Blades are covered by U.S. Pat. 4,630,406



Mechtrix Corporation • W147 N9461 Held Drive • Menomonee Falls, WI 53051  
Tel (262) 255-6555 • Fax (262) 255-2628 • www.mechtrix.com

# Artos Tooling

## “WV” Series Stripping Blades

Used In These  
Machines

### Artos

CS-6  
CS-9  
CS-10  
CS-11  
CS-23  
CS-27

### Kut-Rite

MCS (all)  
BTS (all)



“WV” Series Blades are used to strip round wires with conductor diameters which range between 0.230" and 0.620" and have an outside diameter of 0.700" or less. They are specifically suited for use in Artos CS-6, CS-9, CS-10, CS-11, CS-23 and CS-27 Machines. All “WV” Series Blades feature perfect cutting form radii and are made from specially selected tool steels to insure optimum blade life and performance. “State-of-the-art” manufacturing techniques are used to insure strict dimensional standards are achieved and maintained. “WV” Series Blades are offered in a closely incremented progression of blade sizes to insure the blade hole size closely conforms to the requirements of the wire being processed. As with all “V” Type Stripping Blades, the “WV” Blades are adjustable and offer the excellent cutting properties intrinsic to the “V” type design.

Please contact Mechtrix for assistance in selecting the appropriate size blade for your particular application.

### Mechtrix “WV” Series Stripping Blades

| Mechtrix Description                     | Mechtrix Part Number | Blade Form Diameter |       | OEM Part Number |
|--|----------------------|---------------------|-------|-----------------|
|  |                      | (in)                | (mm)  |                 |
| WV-281A Stripping Blade-Short (WV-932A)  | 00960                | 0.28125             | 7.14  | -               |
| WV-281L Stripping Blade-Long (WV-932L)   | 00959                |                     |       | -               |
| WV-312A Stripping Blade-Short (WV-516A)  | 00963                | 0.31250             | 7.94  | -               |
| WV-312L Stripping Blade-Long (WV-516L)   | 00962                |                     |       | -               |
| WV-343A Stripping Blade-Short (WV-1132A) | 00966                | 0.34375             | 8.73  | -               |
| WV-343L Stripping Blade-Long (WV-1132L)  | 00965                |                     |       | -               |
| WV-375A Stripping Blade-Short (WV-38A)   | 00969                | 0.37500             | 9.53  | -               |
| WV-375L Stripping Blade-Long (WV-38L)    | 00968                |                     |       | -               |
| WV-406A Stripping Blade-Short (WV-1332A) | 01362                | 0.40625             | 10.32 | -               |
| WV-406L Stripping Blade-Long (WV-1332L)  | 01361                |                     |       | -               |
| WV-437A Stripping Blade-Short (WV-716A)  | 01365                | 0.43750             | 11.11 | -               |
| WV-437L Stripping Blade-Long (WV-716L)   | 01364                |                     |       | -               |
| WV-468A Stripping Blade-Short (WV-1532A) | 02375                | 0.46875             | 11.91 | -               |
| WV-468L Stripping Blade-Long (WV-1532L)  | 02374                |                     |       | -               |
| WV-500A Stripping Blade-Short (WV-12A)   | 02371                | 0.50000             | 12.70 | -               |
| WV-500L Stripping Blade-Long (WV-12L)    | 02370                |                     |       | -               |
| WV-531A Stripping Blade-Short (WV-1732A) | 03564                | 0.53125             | 13.49 | -               |
| WV-531L Stripping Blade-Long (WV-1732L)  | 03565                |                     |       | -               |
| WV-562A Stripping Blade-Short (WV-916A)  | 03566                | 0.56250             | 14.29 | -               |
| WV-562L Stripping Blade-Long (WV-916L)   | 03567                |                     |       | -               |
| WV-593A Stripping Blade-Short (WV-1932A) | 02311                | 0.59375             | 15.08 | -               |
| WV-593L Stripping Blade-Long (WV-1932L)  | 02310                |                     |       | -               |
| WV-625A Stripping Blade-Short (WV-58A)   | 14569                | 0.62500             | 15.88 | -               |
| WV-625L Stripping Blade-Long (WV-58L)    | 14570                |                     |       | -               |

### Cut Off Blades

| Mechtrix Description | Mechtrix Part Number | Blade Form Diameter |      | OEM Part Number |
|----------------------|----------------------|---------------------|------|-----------------|
|                      |                      | (in)                | (mm) |                 |
| WCLA                 | 02319                | -                   | -    | -               |

A set of “WV” Series Blades consists of two (2) “WV” Strip Blades-Short, two (2) “WV” Strip Blades-Long and two (2) “WCLA” Cut-off Blades.

Mechtrix “WV” Stripping Blades are covered by U.S. Pat. 4,630,406



Mechtrix Corporation • W147 N9461 Held Drive • Menomonee Falls, WI 53051  
Tel (262) 255-6555 • Fax (262) 255-2628 • www.mechtrix.com

# Artos Tooling

## Mechtrix "M" Series Stripping Blades

### Used In These Machines

#### Artos

CS-6  
CS-9  
CS-10  
CS-11  
CS-15  
CS-18  
CS-20  
TA-20  
CS-21  
CS-23  
CS-27  
CS-30  
CS-33  
S-1

#### Amp

CLS (all)

#### Kut-Rite

MCS (all)  
BTS (all)

"M" Series Stripping Blades are designated "M" as they incorporate a Mechtrix patented blade design which offers a compound entry angle into the cutting portion of the blade. This design feature, while continuing to offer the advantages of a "V" type design (excellent wire gathering and adjustability) facilitates a higher degree of circumferential cut around a wire's conductor.

"M" Series Blades are available in a wide range of closely incremented radii sizes and offer improved performance when processing wire which require a cutting configuration which closely matches the wire's conductor diameter. This feature is of greatest benefit when processing insulations which are either very soft (i.e., Neoprene or Silicon), very hard and thin (i.e., Teflon, etc.), or just very thin. "M" Series Blades will improve difficult processing problems and have, in many cases, facilitated the processing of wires which had previously been impossible to strip automatically.

Please contact Mechtrix for assistance in selecting the appropriate size blade for your particular application.

### "M" Series Tooling Setup

| No. | Part Description          | Qty. | No. | Part Description                  | Qty. |
|-----|---------------------------|------|-----|-----------------------------------|------|
| 1   | "M" Stripping Blade-Short | 2    | 5   | Artos 4" Toolholder               | 2    |
| 2   | "M" Stripping Blade-Long  | 2    | 6   | Mechtrix Endscrew/Washer Assembly | 4    |
| 3   | Cut-off Blade             | 2    | 7   |                                   |      |
| 4   | Spacers                   | -    | 8   |                                   |      |



# Artos Tooling

## Mechtrix "M" Series Stripping Blades



### "M" Series Stripping Blades

| Mechtrix Description        | Mechtrix Part Number | Blade Form Diameter |      | OEM Part Number |
|-----------------------------|----------------------|---------------------|------|-----------------|
|                             |                      | (in)                | (mm) |                 |
| M-016 Stripping Blade-Short | 00343                | 0.01600             | 0.41 | -               |
| M-016L Stripping Blade-Long | 00342                |                     |      | -               |
| M-020 Stripping Blade-Short | 01064                | 0.02000             | 0.51 | -               |
| M-020L Stripping Blade-Long | 01063                |                     |      | -               |
| M-024 Stripping Blade-Short | 00269                | 0.02400             | 0.61 | -               |
| M-024L Stripping Blade-Long | 00268                |                     |      | -               |
| M-028 Stripping Blade-Short | 01066                | 0.02800             | 0.71 | -               |
| M-028L Stripping Blade-Long | 01065                |                     |      | -               |
| M-032 Stripping Blade-Short | 00410                | 0.03200             | 0.81 | -               |
| M-032L Stripping Blade-Long | 00409                |                     |      | -               |
| M-040 Stripping Blade-Short | 01068                | 0.04000             | 1.02 | -               |
| M-040L Stripping Blade-Long | 01067                |                     |      | -               |
| M-048 Stripping Blade-Short | 00413                | 0.04800             | 1.22 | -               |
| M-048L Stripping Blade-Long | 00412                |                     |      | -               |
| M-054 Stripping Blade-Short | 01071                | 0.05400             | 1.37 | -               |
| M-054L Stripping Blade-Long | 01070                |                     |      | -               |
| M-062 Stripping Blade-Short | 00416                | 0.06200             | 1.57 | -               |
| M-062L Stripping Blade-Long | 00415                |                     |      | -               |
| M-070 Stripping Blade-Short | 01074                | 0.07000             | 1.78 | -               |
| M-070L Stripping Blade-Long | 01073                |                     |      | -               |
| M-078 Stripping Blade-Short | 01144                | 0.07800             | 1.98 | -               |
| M-078L Stripping Blade-Long | 01143                |                     |      | -               |
| M-086 Stripping Blade-Short | 01331                | 0.08600             | 2.18 | -               |
| M-086L Stripping Blade-Long | 01330                |                     |      | -               |
| M-094 Stripping Blade-Short | 01334                | 0.09400             | 2.39 | -               |
| M-094L Stripping Blade-Long | 01333                |                     |      | -               |
| M-102 Stripping Blade-Short | 01306                | 0.10200             | 2.59 | -               |
| M-102L Stripping Blade-Long | 01305                |                     |      | -               |
| M-110 Stripping Blade-Short | 01482                | 0.11000             | 2.79 | -               |
| M-110L Stripping Blade-Long | 01481                |                     |      | -               |
| M-118 Stripping Blade-Short | 01485                | 0.11800             | 3.00 | -               |
| M-118L Stripping Blade-Long | 01484                |                     |      | -               |
| M-126 Stripping Blade-Short | 01488                | 0.12600             | 3.20 | -               |
| M-126L Stripping Blade-Long | 01487                |                     |      | -               |
| M-134 Stripping Blade-Short | 01491                | 0.13400             | 3.40 | -               |
| M-134L Stripping Blade-Long | 01490                |                     |      | -               |
| M-142 Stripping Blade-Short | 01494                | 0.14200             | 3.61 | -               |
| M-142L Stripping Blade-Long | 01493                |                     |      | -               |
| M-150 Stripping Blade-Short | 01497                | 0.15000             | 3.81 | -               |
| M-150L Stripping Blade-Long | 01496                |                     |      | -               |
| M-158 Stripping Blade-Short | 01500                | 0.15800             | 4.01 | -               |
| M-158L Stripping Blade-Long | 01499                |                     |      | -               |

A set of "M" Series Blades consists of two (2) "M" Strip Blades-Short, two (2) "M" Strip Blades-Long and two (2) Cut-off Blades.

Mechtrix "M" Series Stripping Blades are covered by U.S. Pat. 4,630,406 and U.S. Pat. 4,577,405



Mechtrix Corporation • W147 N9461 Held Drive • Menomonee Falls, WI 53051  
Tel (262) 255-6555 • Fax (262) 255-2628 • [www.mechtrix.com](http://www.mechtrix.com)

# Artos Tooling

## Mechtrix “ID”, “IDQ” and “WID” Series Tooling

### Used In These Machines

#### Artos

CS-6  
CS-9  
CS-10  
CS-11  
CS-15  
CS-18  
CS-20  
TA-20  
CS-21  
CS-23  
CS-27  
CS-30  
CS-33  
S-1

#### Amp

CLS (all)

#### Kut-Rite

MCS (all)  
BTS (all)

Mechtrix complete line of “Interlocking Die-Type” Stripping Blades are a truly new concept in wire stripping tooling . . . .

The unique, modular concept utilizes components which interlock to achieve the precise formation and alignment of two concentric holes—a stripping hole for the conductor and a guiding hole for the outer insulation. The stripping hole is formed by the “ID” Stripping Blades, the guiding hole is formed by the “IDG” Guide and the “IDS” Stop. These components interlock to form a rigid, single unit as they are closed on a wire.

“ID” Series Blades offer several features which distinguish them from the traditional “die type” designs. Specifically, the “ID” Series Blades . . . .

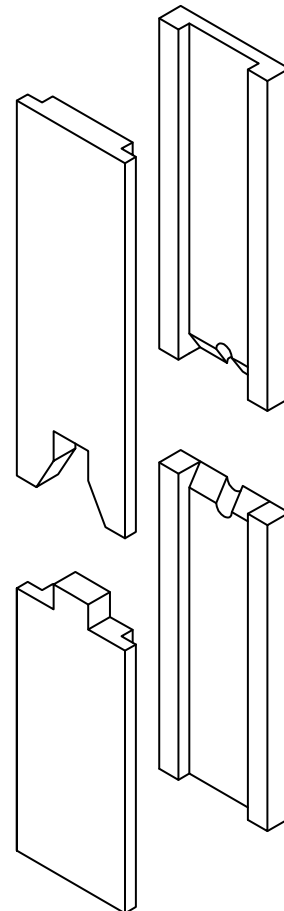
Create perfectly round cutting forms with a sharp edge around the entire periphery of the cutting area. This feature facilitates excellent cutting of the insulation around 360 degrees of the conductor and eliminates the “pinching” effect which is inherent to other “die-type” designs.

Feature an interlocking “IDG” Guide and “IDS” Stop which are sized to precisely define and equalize the penetration depth of the blade cutting edges into the insulation.

Achieve significantly improved gathering of the wire into the blade cutting form as a result of the unique “IDG” Guide design.

Can achieve a minimum 0.125” strip with standard cut-off tooling. Shorter strip lengths are achieved using special cut-off blades.

Offer the flexibility to use “IDG” Guides and “IDS” Stops with other “ID” Stripping Blades sizes, thus minimizing the long term cost of perishable tooling.



**“IDQ” Interlocking Die-Type Stripping Blades** are designed to be used with wires having a Measured Insulation Diameter (D) of less than 0.040” (1.02mm).

**“ID” Interlocking Die-Type Stripping Blades** are designed to be used with wires having a Measured Insulation Diameter (D) between 0.040” and 0.400” (1.02mm - 10.16mm).

**“WID” Interlocking Die-Type Stripping Blades** are designed to be used with wires having a Measured Insulation Diameter (D) between 0.401” and 0.625” (10.17mm - 15.88mm).

# Artos Tooling

## Mechtrix "ID" Series Stripping Blades

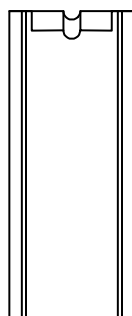
Used In These  
Machines

### Artos

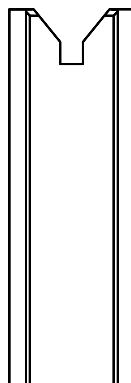
- CS-6
- CS-9
- CS-10
- CS-11
- CS-15
- CS-18
- CS-20
- TA-20
- CS-21
- CS-23
- CS-27
- CS-30
- CS-33
- S-1

### "IDQ" Series Interlocking Die-Type Stripping Blades, Guides and Stops

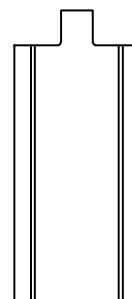
For wires with an Insulation Diameter (D) of up to 0.040" (1.02mm).



"IDQ"  
Stripping  
Blade



"IDGQ"  
Guide



"IDSQ"  
Stop

### Amp

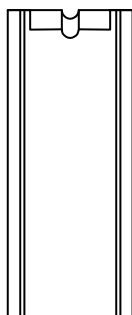
- CLS (all)

### Kut-Rite

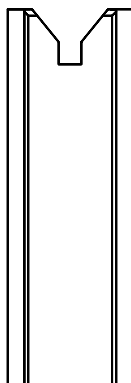
- MCS (all)
- BTS (all)

### "ID" Series Interlocking Die-Type Stripping Blades, Guides and Stops

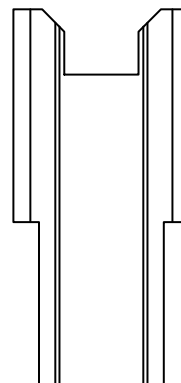
For wires with an Insulation Diameter (D) of 0.040 - 0.400" (1.02 - 10.16mm).



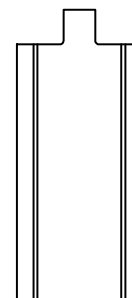
"ID"  
Stripping  
Blade



"IDG"  
Guide



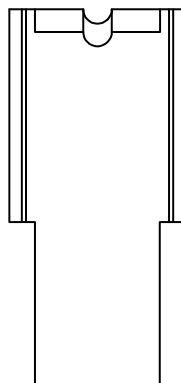
"IDWG"  
Guide



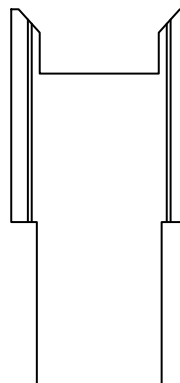
"IDS"  
Stop

### "WID" Series Interlocking Die-Type Stripping Blades, Guides and Stops

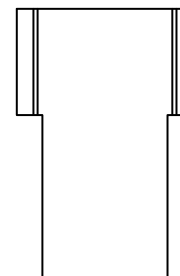
For wires with an Insulation Diameter (D) of 0.401 - 0.625" (10.17 - 15.88mm).



"WID"  
Stripping  
Blade



"WIDG"  
Guide



"WIDS"  
Stop



# Artos Tooling

## Mechtrix "ID" Series Stripping Blades

**Used In These Machines**

**Artos**

- CS-6
- CS-9
- CS-10
- CS-11
- CS-15
- CS-18
- CS-20
- TA-20
- CS-21
- CS-23
- CS-27
- CS-30
- CS-33
- S-1

**Amp**

CLS (all)

**Kut-Rite**

MCS (all)  
BTS (all)

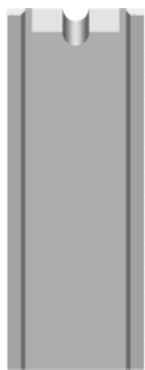
Mechtrix "ID" Series Stripping Blades are designed for use in most wire processing machines made by Artos Engineering Company. "ID" Interlocking Die-Type Stripping Blades are designed to be used with wires having a Measured Insulation Diameter (D) between 0.040" and 0.400" (1.02mm - 10.16mm). "ID" Series Stripping Blades are made to precision standards from a specially selected tool steel to insure optimum performance and blade life and are produced using state-of-the-art manufacturing techniques. The state-of-the-art manufacturing techniques are combined with patented Mechtrix technology to produce perfect stripping form radii.

"ID" Series "Die-type" Stripping Blades incorporate several important features. First, because the blades close against each other, the closing dimension of the machine cutterhead is assured as is the formation of the optimum blade hole size for the blade being used. Second, set-up time is minimized because no adjustments (to the machine cutterhead) are required when changing blade sizes. Though "ID" Series Blades are not adjustable, their non-adjustable feature is of significant benefit when processing thin wall insulations, very hard insulations (Teflon, etc.) or wire with multiple layer insulations (fusible link, etc.).

"ID" Series Blades are available in blade hole size increments of 0.1mm (.004") and require the use of "IDG" Wire Guides and "IDS" Insulation Stops. Please contact Mechtrix for assistance in selecting the appropriate size blade for your particular application.

### "ID" Series Tooling Setup

| No. | Part Description           | Qty. | No. | Part Description                  | Qty. |
|-----|----------------------------|------|-----|-----------------------------------|------|
| 1   | "ID" Stripping Blade-Short | 2    | 5   | Artos 4" Toolholder               | 2    |
| 2   | "ID" Stripping Blade-Long  | 2    | 6   | Mechtrix Endscrew/Washer Assembly | 4    |
| 3   | Cut-off Blade              | 2    | 7   | "IDG" Wire Guide-Long             | 2    |
| 4   | Spacers                    | -    | 8   | "IDS" Stop-Short                  | 2    |





# Artos Tooling

## Mechtrix Stripping Blades for 2-Conductor Cables

### Used In These Machines

#### Artos

CS-6  
CS-9  
CS-10  
CS-11  
CS-15  
CS-18  
CS-20  
TA-20  
CS-21  
CS-23  
CS-26  
CS-27  
CS-29  
CS-30  
CS-33  
S-1

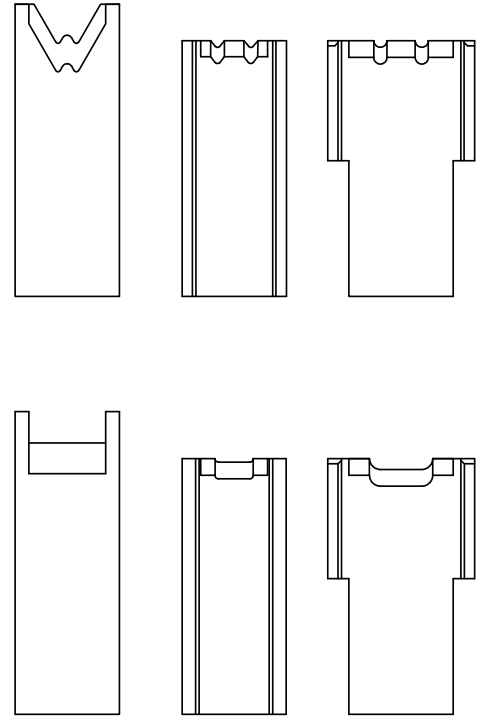
#### Kut-Rite

MCS (all)  
BTS (all)

Mechtrix manufactures both "V" and "Die-Type" Stripping Blades to process flat electrical wire with two (2) parallel conductors (SPT-2, HPN, speaker wire etc.) or for processing two (2) separate wires simultaneously in most wire processing machines manufactured by the Artos Engineering Company.

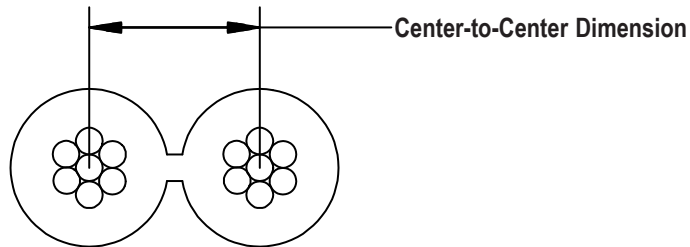
Mechtrix 2-Conductor stripping blades are made to precision standards from a specially selected tool steel to insure optimum performance and blade life and are produced using state-of-the-art manufacturing techniques. Like all Mechtrix Blades these blades are computer designed to insure that the many intersecting angles and radii are optimally suited to the wire being processed. Our precision manufacturing techniques combined with patented cutting form geometry create tools that are optimally suited to our customers specific wire and unique processing requirements. 2-Conductor stripping blades also require the use of "straight cut" cut-off blades for process optimization.

Since many 2-Conductor wires require the ends to be cut and stripped to different lengths, Mechtrix also offers special 2-Conductor stripping blades to accommodate "stagger strip" requirements. (Please note that stagger strip configurations require the use of a pre-slitter).



Mechtrix also offers "Jacket" Stripping Blades for removing the oval shaped outer jacket on 2-Conductor wires with an additional layer of insulation over the primary insulation.

The overwhelming variety and different constructions of 2-Conductor wires makes it difficult to list all of the possible diameter and center-to-center combinations of stripping blades Mechtrix offers to process these wires, so for specific recommendations please contact Mechtrix.



Due to the inherent problems associated with trying to accurately measure the center-to-center dimension of your particular wire, Mechtrix will perform a statistical dimensional analysis free of charge. To obtain an analysis of your wire, please send approximately 3 ft. of wire to Mechtrix. When completed Mechtrix will supply you with a Wire Data Report listing your wire data along with recommended part numbers and prices for all of the tooling required to process your wire.

Mechtrix 2-Conductor Stripping Blades are covered by U.S. Pat. 4,630,406 and U.S. Pat. 5,025,687



Mechtrix Corporation • W147 N9461 Held Drive • Menomonee Falls, WI 53051  
Tel (262) 255-6555 • Fax (262) 255-2628 • [www.mechtrix.com](http://www.mechtrix.com)

# Artos Tooling

## Mechtrix Slitting Tools for Multi-Conductor Flat Cables

### Used In These Machines

#### Artos

CS-6  
CS-9  
CS-10  
CS-11  
CS-15  
CS-18  
CS-20  
TA-20  
CS-21  
CS-23  
CS-26  
CS-27  
CS-29  
CS-30  
CS-33  
S-1

#### Kut-Rite

MCS (all)  
BTS (all)

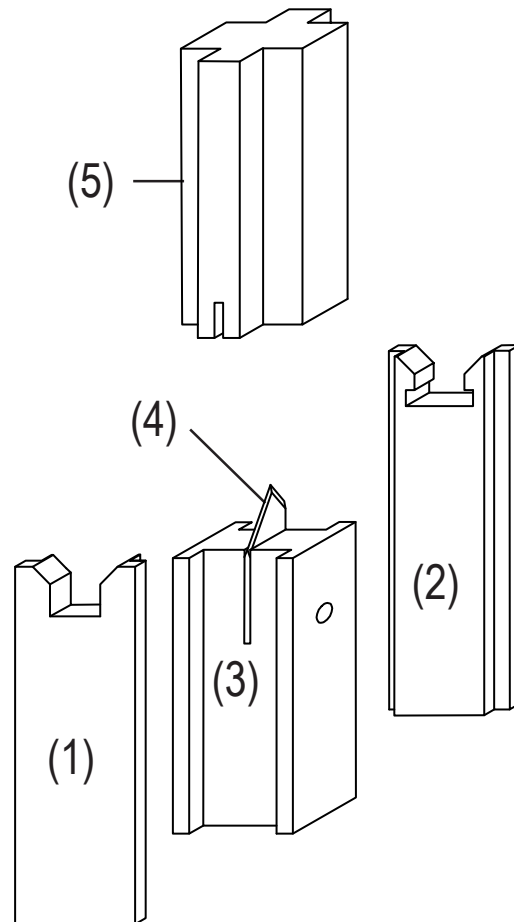
The Mechtrix Slitting Tool System greatly improves the reliability of slitting 2 conductor cables by utilizing Mechtrix patented interlocking tooling design. This concept facilitates greater control over the cable both prior to and during slitting and thus achieves superior results.

All components are made of tool steel which has been hardened and ground to provide long tool life and precise component relationships. The system is a modular concept which allows the user to mix a number of different components together to customize the tooling for a particular cable.

To order slitting tools for a particular cable, please send a wire sample to Mechtrix. Mechtrix will size the cable and provide part numbers and prices.

The components illustrated are for slitting a 2-Conductor cable, slitting tools for 3, 4 and other multi-conductor cables are also available.

The tooling components and the function they perform are listed below:



- (1) **SG-Slitting Guide** is designed to interlock with the SB-Slitting Blade Holder to guide the wire into the proper position for slitting.
- (2) **SGR-Slitting Guide w/Relief** is also designed to interlock with the SB-Slitting Blade Holder to guide the wire into the proper position for slitting. The relief in the bottom of the guide form provides room for the wire to expand after being slit, this reduces the chances of stretching the insulation after it has been slit.
- (3) **SB-Slitting Blade Holder** holds the SK-Slitting knife(s) on a pin without the use of screws, shims, or loose spacers. This system makes replacing slitting knives quick and simple.
- (4) **SK-Slitting Knives** are made out of high quality, heat-treated tool steel which greatly extends their life compared to standard spring steel slitting knives.
- (5) **SP-Slitting Pushers** are designed to push the wire into the slitting knife to a precise depth to insure the most efficient slit possible. The end of the pushers are polished to provide as smooth a surface as possible, allowing the wire to slide easily along their surface during the slitting process.

Mechtrix "Slitting Tools" are covered by U.S. Pat. 5,025,687

# Artos Tooling

## Mechtrix “PC” Series Stripping Blades for 3-Conductor Power Cords

### Used In These Machines

#### Artos

CS-6  
CS-9  
CS-10  
CS-11  
CS-15  
CS-18  
CS-20  
TA-20  
CS-21  
CS-23  
CS-26  
CS-27  
CS-29  
CS-30  
CS-33  
S-1

#### Kut-Rite

MCS (all)  
BTS (all)

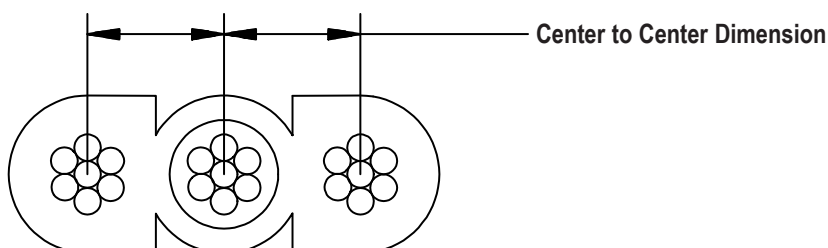
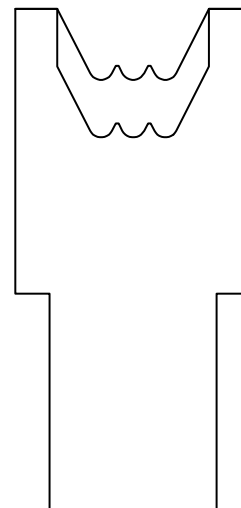
Mechtrix Stripping Blades for Flat Power Cords are truly unique.

Traditionally, SPT or HPN type wires have been processed using stripping blades whose cutting forms have been the same for all three conductors. To optimize process reliability and quality, it is critical that the blade designs recognize that different cutting forms are required to strip the outer conductors than are required to reliably strip the inner (separately insulated) conductor. Only Mechtrix Blades incorporate the cutting form geometries necessary to reliably strip all three conductors simultaneously.

The ability to produce special cutting forms has also enabled Mechtrix to offer blades to process virtually every wire end configuration required. These blades, combined with Mechtrix Accu-Set spacers, have enabled our customers to reliably process stagger strip configurations and difficult wire which were previously impossible to process automatically or relegated to bench or hand operations. (Please note that stagger strip configurations require the use of a pre-slit).

“PC” Stripping Blades also require the use of “straight cut” cut-off blades for process optimization.

The overwhelming number of combinations and permutations of wire end configurations makes it difficult to list all of the possible diameter and center-to-center combinations of stripping blades Mechtrix offers to process these wires, so for specific recommendations please contact Mechtrix. To obtain detailed information regarding tooling recommended for your requirements, please send Mechtrix a sample of your wire along with a detailed drawing of the required wire end configurations.



Due to the inherent problems associated with trying to accurately measure the center-to-center dimension of your particular wire, Mechtrix will perform a statistical dimensional analysis free of charge. To obtain an analysis of your wire, please send approximately 3 ft. of wire to Mechtrix. When completed Mechtrix will supply you with a Wire Data Report listing your wire data along with recommended part numbers and prices for all of the tooling required to process your wire.

Mechtrix “PC” Series Stripping Blades are covered by U.S. Pat. 4,630,406 and U.S. Pat. 5,025,687



Mechtrix Corporation • W147 N9461 Held Drive • Menomonee Falls, WI 53051  
Tel (262) 255-6555 • Fax (262) 255-2628 • [www.mechtrix.com](http://www.mechtrix.com)

# Artos Tooling

## Mechtrix "PC" Series Stripping Blade Configurations

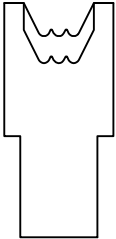
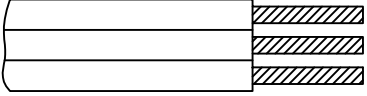
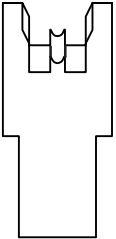
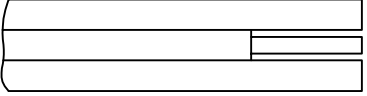
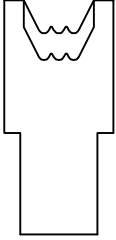
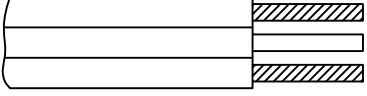
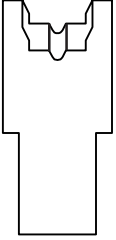
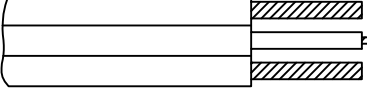
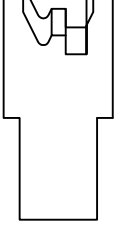
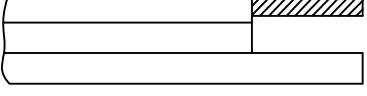
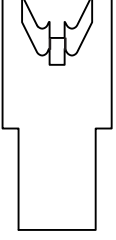
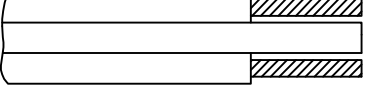
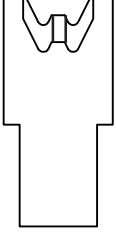
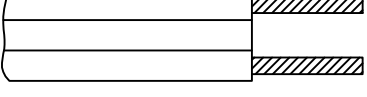
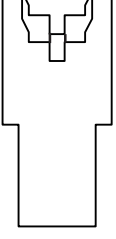
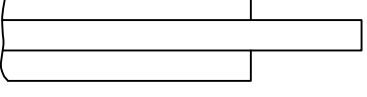
Used In These Machines

**Artos**

- CS-6
- CS-9
- CS-10
- CS-11
- CS-15
- CS-18
- CS-20
- TA-20
- CS-21
- CS-23
- CS-26
- CS-27
- CS-29
- CS-30
- CS-33
- S-1

**Kut-Rite**

- MCS (all)
- BTS (all)

|  |  |
|--|--|
|  <p>Strips all three conductors</p>    |  <p>De-webs bulk off of center ground</p>                                       |
|  <p>Strips outside conductors</p> <p>Strips bulk off green ground insulation</p>              |  <p>Cuts off two outside conductors</p> <p>Strips center ground conductor</p>  |
|  <p>Strips outside conductor</p> <p>Blunt cuts center</p> <p>Leaves outside conductor</p>  |  <p>Strips outside conductors</p> <p>Leaves center bulk</p>                 |
|  <p>Strips outside conductors</p> <p>Blunt cuts center ground</p>                          |  <p>Cuts bulk on outside</p> <p>Leaves center bulk</p>                      |

# Artos Tooling

## Mechtrix “Accu-Set” Spacers©

### Used In These Machines

#### Artos

CS-6  
CS-9  
CS-10  
CS-11  
CS-15  
CS-18  
CS-20  
TA-20  
CS-21  
CS-23  
CS-27  
CS-30  
CS-33  
S-1

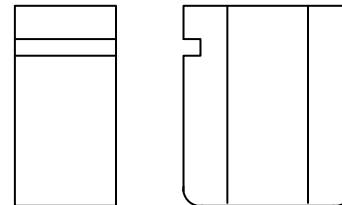
#### Amp

CLS (all)

#### Kut-Rite

MCS (all)  
BTS (all)

Accu-Set Spacers© were developed following a detailed study with regard to the effects of spacers (used in combination to achieve a desired strip length) on Strip Related Failures. The study, entitled “Spacer Analysis” (available upon request at no charge) clearly pointed to a variation in the thickness of the spacers (which are used to separate the cut-off and stripping blades in tooling set-ups) as a cause for improper meshing of blades (thus decreasing tool life and increasing the amount of force required to remove the slug of insulation from a wire) as well as increasing set-up times and substantially contributing to diminished process reliability.



Accu-Set Spacers are thickness toleranced to +/- 0.0005" and are flat and parallel to +/- 0.0003".

Only one (1) Accu-Set Spacer need be used to obtain a desired strip length, thus diminishing set-up time and problems with potential tolerance stack-up which occur when a number of spacers must be used.

Tooling changes can be made more quickly because the Accu-Set Spacers incorporate a small slot at the top of the spacer which aids the efficient removal of the spacer from the tooling assembly.

Accu-Set Spacers are made of through-hardened steel, thus eliminating the development of burrs and facial flaws which affect the dimensional integrity of the spacer.

Accu-Set Spacers are available in both metric and inch sizes, with or without slots to accommodate the use of a knock-out for insulation slug removal.

Mechtrix “Accu-Set” Spacers© are covered by U.S. Pat. 4,784,024



Mechtrix Corporation • W147 N9461 Held Drive • Menomonee Falls, WI 53051  
Tel (262) 255-6555 • Fax (262) 255-2628 • www.mechtrix.com

# Artos Tooling

## Mechtrix "Accu-Set" Spacers©

Used In These  
Machines

### Artos

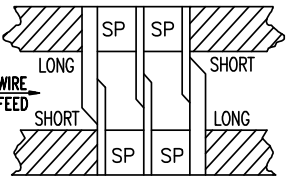
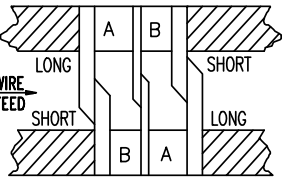
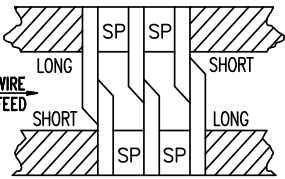
CS-6  
CS-9  
CS-10  
CS-11  
CS-15  
CS-18  
CS-20  
TA-20  
CS-21  
CS-23  
CS-27  
CS-30  
CS-33  
S-1

### Amp

CLS (all)

### Kut-Rite

MCS (all)  
BTS (all)

| DESIRED<br>STRIP<br>LENGTH | USE THIS TABLE IF:  | USE THIS TABLE IF:   |   | USE THIS TABLE IF:  |
|----------------------------|---|--|---|---|
|                            |  |  |  |   |
|                            | -Cut-off Blades are both 1/16" thick<br>-Short Strip Blades are 1/16" thick       | -Cut-off Blades are both 1/16" thick<br>-Short Strip Blades are 1/8" thick         |   | -Cut-off Blades are both 1/8" thick<br>-Short Strip Blades are 1/8" thick |
|                            | ORDER SPACER #  | A  | B   | ORDER SPACER #  |
| 1/8"                       | AS-2  | -  | -   | -   |
| 5/32"                      | AS-3  | -  | -   | -   |
| 3/16"                      | AS-4  | AS-4   | AS-2  | -   |
| 7/32"                      | AS-5  | AS-5   | AS-3  | -   |
| 1/4"                       | AS-6  | AS-6   | AS-4  | AS-4  |
| 9/32"                      | AS-7  | AS-7   | AS-5  | AS-5  |
| 5/16"                      | AS-8  | AS-8   | AS-6  | AS-6  |
| 11/32"                     | AS-9  | AS-9   | AS-7  | AS-7  |
| 3/8"                       | AS-10   | AS-10  | AS-8  | AS-8  |
| 13/32"                     | AS-11   | AS-11  | AS-9  | AS-9  |
| 7/16"                      | AS-12   | AS-12  | AS-10   | AS-10   |
| 15/32"                     | AS-13   | AS-13  | AS-11   | AS-11   |
| 1/2"                       | AS-14   | AS-14  | AS-12   | AS-12   |
| 17/32"                     | AS-15   | AS-15  | AS-13   | AS-13   |
| 9/16"                      | AS-16   | AS-16  | AS-14   | AS-14   |
| 19/32"                     | AS-17   | AS-17  | AS-15   | AS-15   |
| 5/8"                       | AS-18   | AS-18  | AS-16   | AS-16   |
| 21/32"                     | AS-19   | AS-19  | AS-17   | AS-17   |
| 11/16"                     | AS-20   | AS-20  | AS-18   | AS-18   |
| 23/32"                     | AS-21   | AS-21  | AS-19   | AS-19   |
| 3/4"                       | AS-22   | AS-22  | AS-20   | AS-20   |
| 25/32"                     | AS-23   | AS-23  | AS-21   | AS-21   |
| 13/16"                     | AS-24   | AS-24  | AS-22   | AS-22   |
| 27/32"                     | AS-25   | AS-25  | AS-23   | AS-23   |
| 7/8"                       | AS-26   | AS-26  | AS-24   | AS-24   |
| 29/32"                     | AS-27   | AS-27  | AS-25   | AS-25   |
| 15/16"                     | AS-28   | AS-28  | AS-26   | AS-26   |
| 31/32"                     | AS-29   | AS-29  | AS-27   | AS-27   |
| 1"                         | AS-30   | AS-30  | AS-28   | AS-28   |

To order spacers with knock-out slots, simply add the suffix "-S" to the above listed part number.

Mechtrix "Accu-Set" Spacers© are covered by U.S. Pat. 4,784,024



Mechtrix Corporation • W147 N9461 Held Drive • Menomonee Falls, WI 53051  
Tel (262) 255-6555 • Fax (262) 255-2628 • www.mechtrix.com

# Artos Tooling

## Mechtrix "Accu-Set" Spacers©

Used In These Machines

**Artos**

- CS-6
- CS-9
- CS-10
- CS-11
- CS-15
- CS-18
- CS-20
- TA-20
- CS-21
- CS-23
- CS-27
- CS-30
- CS-33
- S-1

**Amp**

CLS (all)

**Kut-Rite**

MCS (all)  
BTS (all)

| DESIRED STRIP LENGTH | USE THIS TABLE IF:   |       | USE THIS TABLE IF:   |       | USE THIS TABLE IF:  |       |
|----------------------|--|-------|--|-------|---|-------|
|                      | <p>-Cut-off Blades are both 1/8" thick<br/>-Short Stripping Blades are 1/16" thick</p> |       | <p>-Cut-off Blades are both 1/8" thick<br/>-"ID" Stripping Blades are used</p> |       | <p>-Cut-off Blades are both 1/16" thick<br/>-"ID" Stripping Blades are used</p> |       |
|                      | ORDER SPACER #   |       | ORDER SPACER #   |       | ORDER SPACER #  |       |
|                      | A  | B     | A  | B     | A   | B     |
| 1/8"                 | -  | -     | -  | -     | AS-2  | AS-4  |
| 5/32"                | -  | -     | -  | -     | AS-3  | AS-5  |
| 3/16"                | AS-2   | AS-4  | AS-2   | AS-6  | AS-4  | AS-6  |
| 7/32"                | AS-3   | AS-5  | AS-3   | AS-7  | AS-5  | AS-7  |
| 1/4"                 | AS-4   | AS-6  | AS-4   | AS-8  | AS-6  | AS-8  |
| 9/32"                | AS-5   | AS-7  | AS-5   | AS-9  | AS-7  | AS-9  |
| 5/16"                | AS-6   | AS-8  | AS-6   | AS-10 | AS-8  | AS-10 |
| 11/32"               | AS-7   | AS-9  | AS-7   | AS-11 | AS-9  | AS-11 |
| 3/8"                 | AS-8   | AS-10 | AS-8   | AS-12 | AS-10   | AS-12 |
| 13/32"               | AS-9   | AS-11 | AS-9   | AS-13 | AS-11   | AS-13 |
| 7/16"                | AS-10  | AS-12 | AS-10  | AS-14 | AS-12   | AS-14 |
| 15/32"               | AS-11  | AS-13 | AS-11  | AS-15 | AS-13   | AS-15 |
| 1/2"                 | AS-12  | AS-14 | AS-12  | AS-16 | AS-14   | AS-16 |
| 17/32"               | AS-13  | AS-15 | AS-13  | AS-17 | AS-15   | AS-17 |
| 9/16"                | AS-14  | AS-16 | AS-14  | AS-18 | AS-16   | AS-18 |
| 19/32"               | AS-15  | AS-17 | AS-15  | AS-19 | AS-17   | AS-19 |
| 5/8"                 | AS-16  | AS-18 | AS-16  | AS-20 | AS-18   | AS-20 |
| 21/32"               | AS-17  | AS-19 | AS-17  | AS-21 | AS-19   | AS-21 |
| 11/16"               | AS-18  | AS-20 | AS-18  | AS-22 | AS-20   | AS-22 |
| 23/32"               | AS-19  | AS-21 | AS-19  | AS-23 | AS-21   | AS-23 |
| 3/4"                 | AS-20  | AS-22 | AS-20  | AS-24 | AS-22   | AS-24 |
| 25/32"               | AS-21  | AS-23 | AS-21  | AS-25 | AS-23   | AS-25 |
| 13/16"               | AS-22  | AS-24 | AS-22  | AS-26 | AS-24   | AS-26 |
| 27/32"               | AS-23  | AS-25 | AS-23  | AS-27 | AS-25   | AS-27 |
| 7/8"                 | AS-24  | AS-26 | AS-24  | AS-28 | AS-26   | AS-28 |
| 29/32"               | AS-25  | AS-27 | AS-25  | AS-29 | AS-27   | AS-29 |
| 15/16"               | AS-26  | AS-28 | AS-26  | AS-30 | AS-28   | AS-30 |
| 31/32"               | AS-27  | AS-29 | AS-27  | AS-31 | AS-29   | AS-31 |
| 1"                   | AS-28  | AS-30 | AS-28  | AS-32 | AS-30   | AS-32 |

To order spacers with knock-out slots, simply add the suffix "-S" to the above listed part number.

Mechtrix "Accu-Set" Spacers© are covered by U.S. Pat. 4,784,024



Mechtrix Corporation • W147 N9461 Held Drive • Menomonee Falls, WI 53051  
Tel (262) 255-6555 • Fax (262) 255-2628 • www.mechtrix.com



# Artos Tooling

## Mechtrix "Accu-Set" Spacers©

Used In These Machines

**Artos**

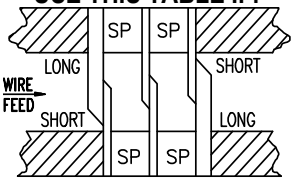
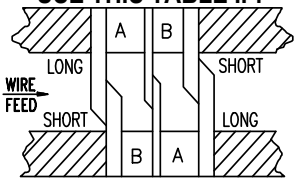
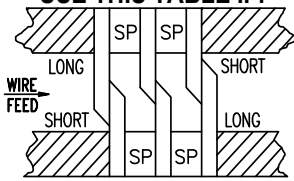
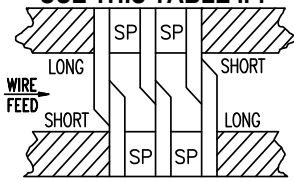
- CS-6
- CS-9
- CS-10
- CS-11
- CS-15
- CS-18
- CS-20
- TA-20
- CS-21
- CS-23
- CS-27
- CS-30
- CS-33
- S-1

**Amp**

CLS (all)

**Kut-Rite**

- MCS (all)
- BTS (all)

| DESIRED STRIP LENGTH | USE THIS TABLE IF:  | USE THIS TABLE IF:   |   | USE THIS TABLE IF:  |
|----------------------|---|--|---|---|
|                      |  |  |  |  |
|                      | -Cut-off Blades are both 1/16" thick<br>-Short Strip Blades are 1/16" thick       | -Cut-off Blades are both 1/16" thick<br>-Short Strip Blades are 1/8" thick         |   | -Cut-off Blades are both 1/8" thick<br>-Short Strip Blades are 1/8" thick           |
|                      | ORDER SPACER #  | ORDER SPACER #   |   | ORDER SPACER #  |
|                      |   | A  | B   |   |
| 3.5mm                | ASM-105   | -  | -   | -   |
| 4.0mm                | ASM-107   | -  | -   | -   |
| 4.5mm                | ASM-110   | -  | -   | -   |
| 5.0mm                | ASM-113   | ASM-113  | ASM-104   | -   |
| 5.5mm                | ASM-116   | ASM-116  | ASM-106   | -   |
| 6.0mm                | ASM-119   | ASM-119  | ASM-109   | -   |
| 6.5mm                | ASM-122   | ASM-122  | ASM-112   | ASM-112   |
| 7.0mm                | ASM-125   | ASM-125  | ASM-115   | ASM-115   |
| 7.5mm                | ASM-128   | ASM-128  | ASM-118   | ASM-118   |
| 8.0mm                | ASM-131   | ASM-131  | ASM-121   | ASM-121   |
| 8.5mm                | ASM-134   | ASM-134  | ASM-124   | ASM-124   |
| 9.0mm                | ASM-137   | ASM-137  | ASM-127   | ASM-127   |
| 9.5mm                | ASM-140   | ASM-140  | ASM-130   | ASM-130   |
| 10.0mm               | ASM-143   | ASM-143  | ASM-133   | ASM-133   |
| 10.5mm               | ASM-146   | ASM-146  | ASM-136   | ASM-136   |
| 11.0mm               | ASM-149   | ASM-149  | ASM-139   | ASM-139   |
| 11.5mm               | ASM-152   | ASM-152  | ASM-142   | ASM-142   |
| 12.0mm               | ASM-155   | ASM-155  | ASM-145   | ASM-145   |
| 12.5mm               | ASM-158   | ASM-158  | ASM-148   | ASM-148   |
| 13.0mm               | ASM-161   | ASM-161  | ASM-151   | ASM-151   |
| 13.5mm               | ASM-164   | ASM-164  | ASM-154   | ASM-154   |
| 14.0mm               | ASM-167   | ASM-167  | ASM-157   | ASM-157   |
| 14.5mm               | ASM-170   | ASM-170  | ASM-160   | ASM-160   |
| 15.0mm               | ASM-173   | ASM-173  | ASM-163   | ASM-163   |
| 15.5mm               | ASM-176   | ASM-176  | ASM-166   | ASM-166   |
| 16.0mm               | ASM-179   | ASM-179  | ASM-169   | ASM-169   |
| 16.5mm               | ASM-182   | ASM-182  | ASM-172   | ASM-172   |
| 17.0mm               | ASM-185   | ASM-185  | ASM-175   | ASM-175   |
| 17.5mm               | ASM-188   | ASM-188  | ASM-178   | ASM-178   |
| 18.0mm               | ASM-191   | ASM-191  | ASM-181   | ASM-181   |
| 18.5mm               | ASM-194   | ASM-194  | ASM-184   | ASM-184   |
| 19.0mm               | ASM-197   | ASM-197  | ASM-187   | ASM-187   |
| 19.5mm               | ASM-200   | ASM-200  | ASM-190   | ASM-190   |
| 20.0mm               | ASM-203   | ASM-203  | ASM-193   | ASM-193   |
| 20.5mm               | ASM-206   | ASM-206  | ASM-196   | ASM-196   |
| 21.0mm               | ASM-209   | ASM-209  | ASM-199   | ASM-199   |
| 21.5mm               | ASM-212   | ASM-212  | ASM-202   | ASM-202   |
| 22.0mm               | ASM-215   | ASM-215  | ASM-205   | ASM-205   |
| 22.5mm               | ASM-218   | ASM-218  | ASM-208   | ASM-208   |
| 23.0mm               | ASM-221   | ASM-221  | ASM-211   | ASM-211   |
| 23.5mm               | ASM-224   | ASM-224  | ASM-214   | ASM-214   |
| 24.0mm               | ASM-226   | ASM-226  | ASM-217   | ASM-217   |
| 24.5mm               | ASM-228   | ASM-228  | ASM-220   | ASM-220   |
| 25.0mm               | ASM-230   | ASM-230  | ASM-223   | ASM-223   |

Mechtrix "Accu-Set" Spacers© are covered by U.S. Pat. 4,784,024



Mechtrix Corporation • W147 N9461 Held Drive • Menomonee Falls, WI 53051  
Tel (262) 255-6555 • Fax (262) 255-2628 • www.mechtrix.com

# Artos Tooling

## Mechtrix "Accu-Set" Spacers©

Used In These Machines

**Artos**

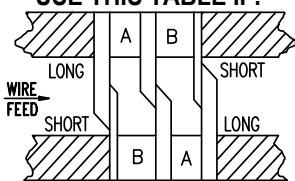
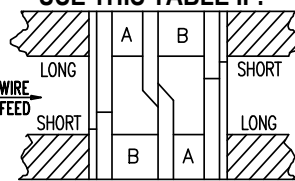
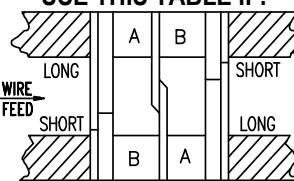
- CS-6
- CS-9
- CS-10
- CS-11
- CS-15
- CS-18
- CS-20
- TA-20
- CS-21
- CS-23
- CS-27
- CS-30
- CS-33
- S-1

**Amp**

CLS (all)

**Kut-Rite**

- MCS (all)
- BTS (all)

| DESIRED STRIP LENGTH | USE THIS TABLE IF:<br> |         | USE THIS TABLE IF:<br> |         | USE THIS TABLE IF:<br> |         |
|----------------------|---|---------|--|---------|---|---------|
|                      | -Cut-off Blades are both 1/8" thick<br>-"Short" Strip Blades are 1/16" thick                            |         | -Cut-off Blades are both 1/8" thick<br>-"ID" Stripping Blades are used                                   |         | -Cut-off Blades are both 1/16" thick<br>-"ID" Stripping Blades are used                                   |         |
|                      | ORDER SPACER #  |         | ORDER SPACER #   |         | ORDER SPACER #  |         |
|                      | A   | B       | A  | B       | A   | B       |
| 3.5mm                | -   | -       | -  | -       | ASM-105   | ASM-114 |
| 4.0mm                | -   | -       | -  | -       | ASM-107   | ASM-117 |
| 4.5mm                | -   | -       | -  | -       | ASM-110   | ASM-120 |
| 5.0mm                | ASM-104   | ASM-113 | ASM-104  | ASM-123 | ASM-113   | ASM-123 |
| 5.5mm                | ASM-106   | ASM-116 | ASM-106  | ASM-126 | ASM-116   | ASM-126 |
| 6.0mm                | ASM-109   | ASM-119 | ASM-109  | ASM-129 | ASM-119   | ASM-129 |
| 6.5mm                | ASM-112   | ASM-122 | ASM-112  | ASM-132 | ASM-122   | ASM-132 |
| 7.0mm                | ASM-115   | ASM-125 | ASM-115  | ASM-135 | ASM-125   | ASM-135 |
| 7.5mm                | ASM-118   | ASM-128 | ASM-118  | ASM-138 | ASM-128   | ASM-138 |
| 8.0mm                | ASM-121   | ASM-131 | ASM-121  | ASM-141 | ASM-131   | ASM-141 |
| 8.5mm                | ASM-124   | ASM-134 | ASM-124  | ASM-144 | ASM-134   | ASM-144 |
| 9.0mm                | ASM-127   | ASM-137 | ASM-127  | ASM-147 | ASM-137   | ASM-147 |
| 9.5mm                | ASM-130   | ASM-140 | ASM-130  | ASM-150 | ASM-140   | ASM-150 |
| 10.0mm               | ASM-133   | ASM-143 | ASM-133  | ASM-153 | ASM-143   | ASM-153 |
| 10.5mm               | ASM-136   | ASM-146 | ASM-136  | ASM-156 | ASM-146   | ASM-156 |
| 11.0mm               | ASM-139   | ASM-149 | ASM-139  | ASM-159 | ASM-149   | ASM-159 |
| 11.5mm               | ASM-142   | ASM-152 | ASM-142  | ASM-162 | ASM-152   | ASM-162 |
| 12.0mm               | ASM-145   | ASM-155 | ASM-145  | ASM-165 | ASM-155   | ASM-165 |
| 12.5mm               | ASM-148   | ASM-158 | ASM-148  | ASM-168 | ASM-158   | ASM-168 |
| 13.0mm               | ASM-151   | ASM-161 | ASM-151  | ASM-171 | ASM-161   | ASM-171 |
| 13.5mm               | ASM-154   | ASM-164 | ASM-154  | ASM-174 | ASM-164   | ASM-174 |
| 14.0mm               | ASM-157   | ASM-167 | ASM-157  | ASM-177 | ASM-167   | ASM-177 |
| 14.5mm               | ASM-160   | ASM-170 | ASM-160  | ASM-180 | ASM-170   | ASM-180 |
| 15.0mm               | ASM-163   | ASM-173 | ASM-163  | ASM-183 | ASM-173   | ASM-183 |
| 15.5mm               | ASM-166   | ASM-176 | ASM-166  | ASM-186 | ASM-176   | ASM-186 |
| 16.0mm               | ASM-169   | ASM-179 | ASM-169  | ASM-189 | ASM-179   | ASM-189 |
| 16.5mm               | ASM-172   | ASM-182 | ASM-172  | ASM-192 | ASM-182   | ASM-192 |
| 17.0mm               | ASM-175   | ASM-185 | ASM-175  | ASM-195 | ASM-185   | ASM-195 |
| 17.5mm               | ASM-178   | ASM-188 | ASM-178  | ASM-198 | ASM-188   | ASM-198 |
| 18.0mm               | ASM-181   | ASM-191 | ASM-181  | ASM-201 | ASM-191   | ASM-201 |
| 18.5mm               | ASM-184   | ASM-194 | ASM-184  | ASM-204 | ASM-194   | ASM-204 |
| 19.0mm               | ASM-187   | ASM-197 | ASM-187  | ASM-207 | ASM-197   | ASM-207 |
| 19.5mm               | ASM-190   | ASM-200 | ASM-190  | ASM-210 | ASM-200   | ASM-210 |
| 20.0mm               | ASM-193   | ASM-203 | ASM-193  | ASM-213 | ASM-203   | ASM-213 |
| 20.5mm               | ASM-196   | ASM-206 | ASM-196  | ASM-216 | ASM-206   | ASM-216 |
| 21.0mm               | ASM-199   | ASM-209 | ASM-199  | ASM-219 | ASM-209   | ASM-219 |
| 21.5mm               | ASM-202   | ASM-212 | ASM-202  | ASM-222 | ASM-212   | ASM-222 |
| 22.0mm               | ASM-205   | ASM-215 | ASM-205  | ASM-225 | ASM-215   | ASM-225 |
| 22.5mm               | ASM-208   | ASM-218 | ASM-208  | ASM-227 | ASM-218   | ASM-227 |
| 23.0mm               | ASM-211   | ASM-221 | ASM-211  | ASM-229 | ASM-221   | ASM-229 |
| 23.5mm               | ASM-214   | ASM-224 | ASM-214  | ASM-231 | ASM-224   | ASM-231 |
| 24.0mm               | ASM-217   | ASM-226 | ASM-217  | ASM-232 | ASM-226   | ASM-232 |
| 24.5mm               | ASM-220   | ASM-228 | ASM-220  | ASM-233 | ASM-228   | ASM-233 |
| 25.0mm               | ASM-223   | ASM-230 | ASM-223  | ASM-234 | ASM-230   | ASM-234 |

Mechtrix "Accu-Set" Spacers© are covered by U.S. Pat. 4,784,024



Mechtrix Corporation • W147 N9461 Held Drive • Menomonee Falls, WI 53051  
Tel (262) 255-6555 • Fax (262) 255-2628 • www.mechtrix.com

# Artos Tooling

## Artos Toolholders

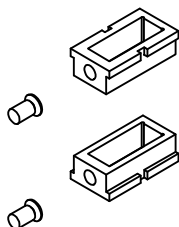
### Used In These Machines

#### Artos

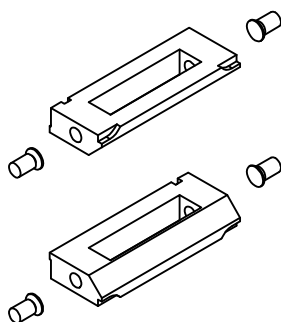
CS-6  
CS-9  
CS-10  
CS-11  
CS-15  
CS-18  
CS-20  
TA-20  
CS-21  
CS-23  
CS-27  
CS-30  
CS-33  
S-1

Mechtrix offers the standard array of toolholders for most of the Artos Wire Processing Machines. We do not manufacture the toolholders but, we qualify the toolholders we sell to insure that they are functionally correct.

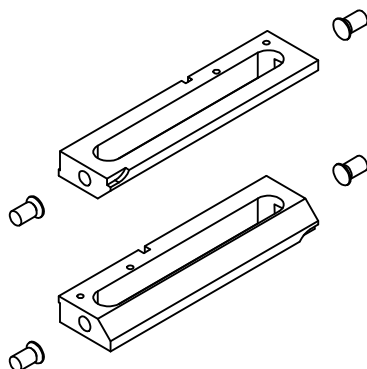
and add our unique end screw/washer component that eliminates the possibility of the washer falling out of the toolholder screw.



Artos 2" Toolholders with Mechtrix End Screw/Washer Assembly



Artos 4" Toolholders with Mechtrix End Screw/Washer Assembly



Artos 6" Toolholders with Mechtrix End Screw/Washer Assembly

### Artos Toolholders Available thru Mechtrix

| Mechtrix Description                        | Mechtrix Part Number | Blade Form Diameter |      | OEM Part Number |
|---|----------------------|---------------------|------|-----------------|
|   |                      | (in)                | (mm) |                 |
| Artos 2" Toolholder w/#2515 End Screw (ea.) | 08422-500            | -                   | -    | AH-1615-500     |
| Artos 4" Toolholder w/#2515 End Screw (ea.) | 07578-500            | -                   | -    | H-2527          |
| Artos 6" Toolholder w/#2515 End Screw (set) | 07579-500            | -                   | -    | AH-2761-500     |
| Artos 8" Toolholder w/#2515 End Screw (set) | 07580-500            | -                   | -    | AH-2762-500     |
| CS-27 6" Toolholder w/#2515 End Screw (ea.) | 13648-500            | -                   | -    | 81299-1         |
| CS-27 8" Toolholder w/#2515 End Screw (ea.) | 13649-500            | -                   | -    | 81299-2         |
| End Screw/Washer Assembly                   | 02515-500            | -                   | -    | -               |
| Shear Head Screws                           | 01129                | -                   | -    | -               |