

AMP/Tyco Tooling

AMP CLS-IV Stripping Blades

Used In These
Machines

AMP
CLS-IV

Mechtrix manufactures a complete selection of cut-off and stripping blades for all of the AMP CLS Series Machines. Mechtrix AMP "CLS" Cut-off and Stripping Blades are made to precision standards from a specially selected tool steel to insure optimum performance and blade life and are produced using state-of-the-art manufacturing techniques. Mechtrix AMP "CLS" Stripping Blades have the Mechtrix patented feature of a cutting form which includes a perfectly formed cutting radius. The perfectly formed cutting radius insures optimum cutting of the insulation while the entry angle improves the blade's "gathering" characteristics, thus eliminating the need for wire guides. Please contact Mechtrix for assistance in selecting the appropriate size blade for your particular application.

AMP CLS-IV Stripping Blades



Mechtrix Description	Mechtrix Part Number	Blade Form Diameter		OEM Part Number
		(in)	(mm)	
V-112S Stripping Blade-Short (10ga.)	12725	0.11200	2.84	1-844765-13
V-112L Stripping Blade-Long (10ga.)	12724			1-844765-14
V-096S Stripping Blade-Short (12ga.)	14220	0.09600	2.44	1-844765-1
V-096L Stripping Blade-Long (12ga.)	14221			1-844765-2
V-076S Stripping Blade-Short (14ga.)	12761	0.07600	1.93	844765-9
V-076L Stripping Blade-Long (14ga.)	12760			1-844765-0
V-062S Stripping Blade-Short (16ga.)	14222	0.06200	1.57	844765-7
V-062L Stripping Blade-Long (16ga.)	14223			844765-8
V-052S Stripping Blade-Short (18ga.)	12759	0.05200	1.32	844765-5
V-052L Stripping Blade-Long (18ga.)	12758			844765-6
V-042S Stripping Blade-Short (20ga.)	12757	0.04200	1.07	844765-3
V-042L Stripping Blade-Long (20ga.)	12756			844765-4
V-034S Stripping Blade-Short (22-24ga.)	14218	0.03400	0.86	844765-1
V-034L Stripping Blade-Long (22-24ga.)	14219			844765-2
V-022S Stripping Blade-Short (26ga.)	12755	0.02200	0.56	1-844765-9
V-022L Stripping Blade-Long (26ga.)	12754			2-844765-0

AMP CLS-IV Cut-off Blades

Mechtrix Description	Mechtrix Part Number	Blade Form Diameter		OEM Part Number
		(in)	(mm)	
MCL Cut-off Blade (22-30ga.)	01393	-	-	-
CL Cut-off Blade (12-20ga.)	00022	-	-	844764-1
CLA Cut-off Blade (10-12ga.)	00024	-	-	844764-2

AMP CLS-IV Toolholder

Mechtrix Description	Mechtrix Part Number	Blade Form Diameter		OEM Part Number
		(in)	(mm)	
Mechtrix AMP CLS Toolholder	01139-500	-	-	568964-1-C

AMP/Tyco Tooling

AMP Special Stripping Blades

Used In These
Machines

AMP
CLS-IV

In addition to the standard replacement stripping blades for the AMP CLS Series, Mechtrix also offers both our patented M-Series and ID-Series stripping form geometries for processing difficult insulations or wire types. A brief description of each of the two types of blades is listed below, for more complete information on these types of blades please refer to the Artos section of this catalog. Please contact Mechtrix for assistance in selecting the appropriate style and size blade for your particular application.

M-Series Stripping Blades

Mechtrix M-Series Stripping Blades are designated "M" as they incorporate a MECHTRIX patented blade design which offers a compound entry angle into the cutting portion of the blade. This design feature, while continuing to offer the advantages of a "V" type design (excellent wire gathering and adjustability) facilitates a higher degree of circumferential cut around a wire's conductor.

M-Series Blades are available in a wide range of closely incremented radii sizes and offer improved performance when processing wire which require a cutting configuration which closely matches the wire's conductor diameter. This feature is of greatest benefit when processing insulations which are either very soft (i.e., Neoprene or Silicon), very hard and thin (i.e., Teflon, etc.), or just very thin.



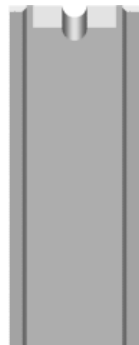
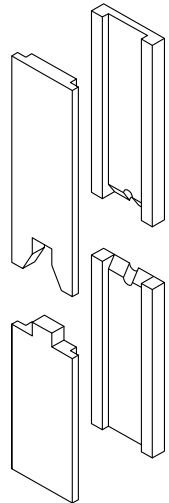
Mechtrix M-Series Stripping Blades

Mechtrix Description	Mechtrix Part Number	Blade Form Diameter		OEM Part Number
		(in)	(mm)	
M-Series Blades are available in 0.004" and 0.008" increments in the following sizes: M-016 thru M-158 Long and Short	-	-	-	-

ID-Series Stripping Blades

Mechtrix ID-Series Stripping Blades are a patented die-type or butting style stripping blade design. The "ID" designates that the blades are Interlocking Die-Type Stripping Blades which incorporate a unique modular concept for mixing and matching stripping blades, guides and supports for virtually any combination of wire conductor and insulation diameters.

ID-Series Blades are also available in a wide range of closely incremented radii sizes and are the only style of blades that form a perfectly round stripping form that is mechanically defined by the blades actually stopping against one another. The guide and support components also mechanically control not only the gathering and centering of the wire into the stripping blades but also the maximum depth that each blade can cut into the insulation during stripping. These blades are very well suited to applications such as cross-link or other exotic insulations that require extra control of the depth of cut.



Mechtrix ID-Series Stripping Blades

Mechtrix Description	Mechtrix Part Number	Blade Form Diameter		OEM Part Number
		(in)	(mm)	
ID-Series Blades are available in 0.1mm increments in the following sizes: ID-0.4 thru ID-9.0 Long and Short	-	-	-	-

Mechtrix "M" and "ID" Series Stripping Blades are protected by U.S. Patent 5,025,687 and U.S. Patent 4,577,405