

# Misc. Blades and Tooling

## Carpenter Model 93 and 97A Wire Strippers

Used In These  
Machines

Carpenter  
Model 93  
Model 97A

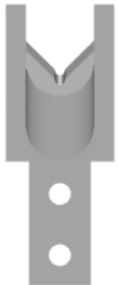
The Carpenter Model 93 and 97A Machines use a single set of "Universal" Stripping Blades to remove the insulation from the end of a wire. Mechtrix blades for the Carpenter Model 93 and 97A Machines are made to precision standards from a specially selected tool steel to insure optimum performance and blade life and are produced using state-of-the-art manufacturing techniques. The state-of-the-art manufacturing techniques are combined with patented Mechtrix technology to produce perfect stripping form radii.

In addition to the "Universal" Stripping Blades, Mechtrix also offers both our patented M-Series and Full Radius stripping form geometries for processing difficult insulations in the Carpenter Model 93 and 97A Machines. Please contact Mechtrix for assistance in selecting the appropriate style and size blade for your particular application.



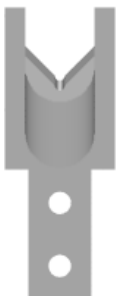
### Carpenter 93 and 97A Universal Stripping and Cut-off Blades

Mechtrix Description	Mechtrix Part Number	Blade Form Diameter		OEM Part Number
		(in)	(mm)	
Carpenter C97 Universal Strip Blade (Tool Steel)	26496-03	-	-	08961
Carpenter C97 Universal Strip Blade (Carbide)	26496-02	-	-	-
Carpenter C97 Heavy Duty Strip Blade (Tool Steel)	26497-03	-	-	-
Carpenter C97 Heavy Duty Strip Blade (Carbide)	26497-02	-	-	-



### Carpenter 93 and 97A M-Series Blades

Mechtrix Description	Mechtrix Part Number	Blade Form Diameter		OEM Part Number
		(in)	(mm)	
M-Series Blades are available in 0.1mm increments in the following sizes: C97M-0.4 thru C97M-4.0	-	-	-	-



### Carpenter 93 and 97A Full Radius Blades

Mechtrix Description	Mechtrix Part Number	Blade Form Diameter		OEM Part Number
		(in)	(mm)	
Full Radius Blades are available in 0.1mm increments in the following sizes: C97-0.4D thru C97-4.0D	-	-	-	-