

Eubanks Tooling

“EVU” Universal Stripping Blades

Used In These Machines

Eubanks

- 1000
- 2600
- 2670
- 2700
- 2750
- 2800
- 2900
- 4000

The "EVU-.930" Stripping Blades are a "Universal" Stripping Blade that can be used to process 32-12 gage wire. The "Universal" Blades are used in conjunction with three different length cut-off blades to cover the above mentioned wire gage range in the following ranges. Mechtrix "EVU" and "EVC" Blades are made to precision standards from a specially selected tool steel to insure optimum performance and blade life.

The "EVU-.930" Stripping Blades are only suitable for easily stripped wires. Please consult Mechtrix for further information.



EVU Stripping Blades

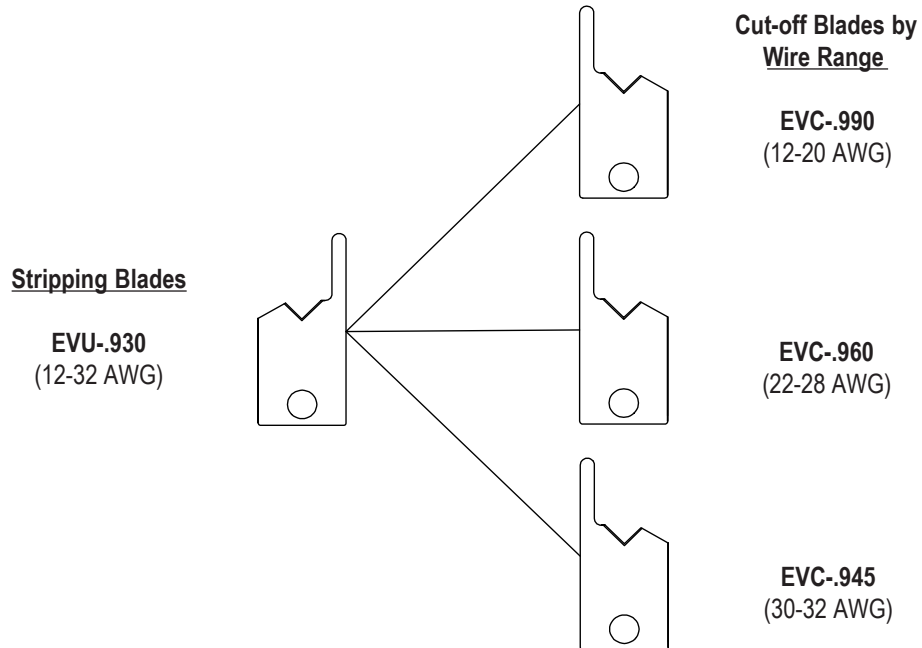
Mechtrix Description	Mechtrix Part Number	Blade Form Diameter		OEM Part Number
		(in)	(mm)	
EVU-.930 Stripping Blade	08223	-	-	00154

EVC Cut-off Blades

Mechtrix Description	Mechtrix Part Number	Blade Form Diameter		OEM Part Number
		(in)	(mm)	
EVC-.990 Cut-off Blade	08225	-	-	00157
EVC-.960 Cut-off Blade	08922	-	-	00158
EVC-.945 Cut-off Blade	08923	-	-	00159

A set of EVU/EVC Blades consists of four (4) EVU Strip Blades and two (2) EVC Cut-off Blades.

Selection Guide for “EVU” Stripping and “EVC” Cut-off Blades



Mechtrix "EVU" Stripping Blades are covered by U.S. Pat. 4,630,406



Eubanks Tooling

“EV” Series V-type Stripping Blades

Used In These
Machines

Eubanks

1000
2600
2670
2700
2750
2800
2900
4000

Mechtrix “EV” Series Stripping Blades can be used in most standard Eubanks Pneumatic Wire Processing Machines. “EV” Series Stripping Blades are made to precision standards from a specially selected tool steel to insure optimum performance and blade life and are produced using state-of-the-art manufacturing techniques. “EV” Series Stripping Blades have the Mechtrix patented feature of a cutting form which includes a perfectly formed cutting radius. The perfectly formed cutting radius insures optimum cutting of the insulation while the entry angle improves the blade’s “gathering” characteristics, thus eliminating the need for wire guides.

“EV” Series Stripping Blades are a “V-type” blade and offer several advantages over “die-type” blades. These advantages include adjustability over a range of conductor diameters (rather than being sized for only one conductor diameter as is a die-type blade), superior cutting and gathering ability, and longer blade life. Please contact Mechtrix for assistance in selecting the appropriate size blade for your particular application.



EV Stripping Blades

Mechtrix Description	Mechtrix Part Number	Blade Form Diameter		OEM Part Number
		(in)	(mm)	
EV-0.30 Stripping Blade	12418	0.01181	0.30	-
EV-0.55 Stripping Blade	12419	0.02165	0.55	-
EV-0.78 Stripping Blade	12420	0.03071	0.78	-
EV-1.13 Stripping Blade	08292	0.04449	1.13	-
EV-1.65 Stripping Blade	08293	0.06496	1.65	-
EV-2.09 Stripping Blade	08294	0.08228	2.09	-
EV-2.53 Stripping Blade	09969	0.09961	2.53	-
EV-3.01 Stripping Blade	08965	0.11850	3.01	-
EV-3.49 Stripping Blade	12421	0.13740	3.49	-
EV-4.37 Stripping Blade	12422	0.17205	4.37	-

EVC Cut-off Blades

Mechtrix Description	Mechtrix Part Number	Blade Form Diameter		OEM Part Number
		(in)	(mm)	
EVC-.990	08225	-	-	00157

A set of EV/EVC Blades consists of four (4) EV Strip Blades and two (2) EVC Cut-off Blades.

Mechtrix “EV” Stripping Blades are covered by U.S. Pat. 4,630,406



Mechtrix Corporation • W147 N9461 Held Drive • Menomonee Falls, WI 53051
Tel (262) 255-6555 • Fax (262) 255-2628 • www.mechtrix.com

Eubanks Tooling

“ED” Stripping Blades and “EDG” Wire Guides

Used In These
Machines

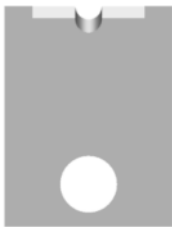
Eubanks

1000
2600
2670
2700
2750
2800
2900
3751
4000
4850

MECHTRIX “ED” Series Stripping Blades are designed for use in all standard Eubanks Pnuematic Wire Processing Machines. “ED” Series Stripping Blades are made to precision standards from a specially selected tool steel to insure optimum performance and blade life and are produced using state-of-the-art manufacturing techniques. The state-of-the-art manufacturing techniques are combined with patented Mechtrix technology to produce perfect stripping form radii.

“ED” Series “Die-type” Stripping Blades incorporate several important features. First, because the blades close against each other, the closing dimension of the machine cutterhead is assured as is the formation of the optimum blade hole size for the blade being used. Second, set-up time is minimized because no adjustments (to the machine cutterhead) are required when changing blade sizes. Though “ED” Series Blades are not adjustable, their non-adjustable feature is of significant benefit when processing thin wall insulations, very hard insulations (Teflon, etc.) or wire with multiple layer insulations (fusible link, etc.).

“ED” Series Blades are available in blade hole size increments of 0.1mm (.004”) and require the use of “EDG” Wire Guides. Please contact Mechtrix for assistance in selecting the appropriate size blade for your particular application.



ED Stripping Blades

Mechtrix Description	Mechtrix Part Number	Blade Form Diameter		OEM Part Number
		(in)	(mm)	
ED-0.4 Stripping Blade	08742	0.01575	0.40	-
ED-0.5 Stripping Blade	13560	0.01969	0.50	-
ED-0.6 Stripping Blade	08221	0.02362	0.60	-
ED-0.7 Stripping Blade	08497	0.02756	0.70	-
ED-0.8 Stripping Blade	08498	0.03150	0.80	-
ED-0.9 Stripping Blade	09211	0.03543	0.90	-
ED-1.0 Stripping Blade	08453	0.03937	1.00	-
ED-1.1 Stripping Blade	09967	0.04331	1.10	-
ED-1.2 Stripping Blade	09349	0.04724	1.20	-
ED-1.3 Stripping Blade	08588	0.05118	1.30	-
ED-1.4 Stripping Blade	10857	0.05512	1.40	-
ED-1.5 Stripping Blade	09402	0.05906	1.50	-
ED-1.6 Stripping Blade	08454	0.06299	1.60	-
ED-1.7 Stripping Blade	08522	0.06693	1.70	-
ED-1.8 Stripping Blade	07844	0.07087	1.80	-
ED-1.9 Stripping Blade	08523	0.07480	1.90	-
ED-2.0 Stripping Blade	08524	0.07874	2.00	-
ED-2.1 Stripping Blade	09935	0.08268	2.10	-
ED-2.2 Stripping Blade	11412	0.08661	2.20	-
ED-2.3 Stripping Blade	07893	0.09055	2.30	-
ED-2.4 Stripping Blade	08525	0.09449	2.40	-
ED-2.5 Stripping Blade	08526	0.09843	2.50	-
ED-2.6 Stripping Blade	09743	0.10236	2.60	-
ED-2.7 Stripping Blade	09744	0.10630	2.70	-
ED-2.8 Stripping Blade	09217	0.11024	2.80	-
ED-2.9 Stripping Blade	09785	0.11417	2.90	-
ED-3.0 Stripping Blade	09183	0.11811	3.00	-
ED-3.1 Stripping Blade	12343	0.12205	3.10	-

Mechtrix “ED” Stripping Blades are covered by U.S. Pat. 4,630,406



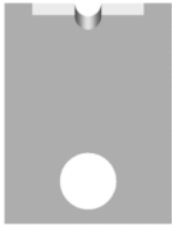
Mechtrix Corporation • W147 N9461 Held Drive • Menomonee Falls, WI 53051
Tel (262) 255-6555 • Fax (262) 255-2628 • www.mechtrix.com

Eubanks Tooling

Used In These
Machines

Eubanks

1000
2600
2670
2700
2750
2800
2900
3751
4000
4850



ED Stripping Blades (continued)

Mechtrix Description	Mechtrix Part Number	Blade Form Diameter		OEM Part Number
		(in)	(mm)	
ED-3.2 Stripping Blade	10341	0.12598	3.20	-
ED-3.3 Stripping Blade	08417	0.12992	3.30	-
ED-3.4 Stripping Blade	08423	0.13386	3.40	-
ED-3.5 Stripping Blade	13873	0.13780	3.50	-
ED-3.6 Stripping Blade	09784	0.14173	3.60	-
ED-3.7 Stripping Blade	13281	0.14567	3.70	-
ED-3.8 Stripping Blade	11789	0.14961	3.80	-
ED-3.9 Stripping Blade	20319	0.15354	3.90	-
ED-4.0 Stripping Blade	09834	0.15748	4.00	-
ED-4.1 Stripping Blade	09218	0.16142	4.10	-
ED-4.2 Stripping Blade	09184	0.16535	4.20	-
ED-4.3 Stripping Blade	08654	0.16929	4.30	-
ED-4.4 Stripping Blade	08653	0.17323	4.40	-
ED-4.5 Stripping Blade	09152	0.17717	4.50	-
ED-4.6 Stripping Blade	08035	0.18110	4.60	-
ED-4.7 Stripping Blade	11466	0.18504	4.70	-
ED-4.8 Stripping Blade	09427	0.18898	4.80	-
ED-4.9 Stripping Blade	07818	0.19291	4.90	-
ED-5.0 Stripping Blade	09222	0.19685	5.00	-
ED-5.1 Stripping Blade	08722	0.20079	5.10	-
ED-5.2 Stripping Blade	08652	0.20472	5.20	-
ED-5.3 Stripping Blade	11467	0.20866	5.30	-
ED-5.4 Stripping Blade	08723	0.21260	5.40	-
ED-5.5 Stripping Blade	08418	0.21654	5.50	-
ED-5.6 Stripping Blade	08377	0.22047	5.60	-
ED-5.7 Stripping Blade	08554	0.22441	5.70	-
ED-5.8 Stripping Blade	11468	0.22835	5.80	-
ED-5.9 Stripping Blade	14363	0.23228	5.90	-
ED-6.0 Stripping Blade	08321	0.23622	6.00	-
ED-6.1 Stripping Blade	13490	0.24016	6.10	-
ED-6.2 Stripping Blade	08784	0.24409	6.20	-
ED-6.3 Stripping Blade	14077	0.24803	6.30	-
ED-6.4 Stripping Blade	08343	0.25197	6.40	-
ED-6.5 Stripping Blade	08360	0.25591	6.50	-
ED-6.6 Stripping Blade	08633	0.25984	6.60	-
ED-6.7 Stripping Blade	12342	0.26378	6.70	-
ED-6.8 Stripping Blade	08552	0.26772	6.80	-
ED-6.9 Stripping Blade	13527	0.27165	6.90	-
ED-7.0 Stripping Blade	10670	0.27559	7.00	-
ED-7.1 Stripping Blade	11188	0.27953	7.10	-
ED-7.2 Stripping Blade	08286	0.28346	7.20	-
ED-7.3 Stripping Blade	12305	0.28740	7.30	-
ED-7.4 Stripping Blade	12722	0.29134	7.40	-
ED-7.5 Stripping Blade	11052	0.29528	7.50	-
ED-7.6 Stripping Blade	08212	0.29921	7.60	-
ED-7.7 Stripping Blade	16364	0.30315	7.70	-

Mechtrix "ED" Stripping Blades are covered by U.S. Pat. 4,630,406



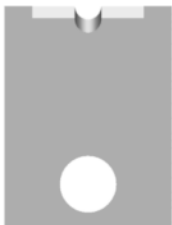
Mechtrix Corporation • W147 N9461 Held Drive • Menomonee Falls, WI 53051
Tel (262) 255-6555 • Fax (262) 255-2628 • www.mechtrix.com

Eubanks Tooling

Used In These
Machines

Eubanks

1000
2600
2670
2700
2750
2800
2900
3751
4000
4850



ED Stripping Blades (continued)

Mechtrix Description	Mechtrix Part Number	Blade Form Diameter		OEM Part Number
		(in)	(mm)	
ED-7.8 Stripping Blade	09426	0.30709	7.80	-
ED-7.9 Stripping Blade	10957	0.31102	7.90	-
ED-8.0 Stripping Blade	10671	0.31496	8.00	-
ED-8.1 Stripping Blade	08379	0.31890	8.10	-
ED-8.2 Stripping Blade	17694	0.32283	8.20	-
ED-8.3 Stripping Blade	23031	0.32677	8.30	-
ED-8.4 Stripping Blade	10863	0.33071	8.40	-
ED-8.5 Stripping Blade	13525	0.33465	8.50	-
ED-8.6 Stripping Blade	12341	0.33858	8.60	-
ED-8.7 Stripping Blade	08655	0.34252	8.70	-
ED-8.8 Stripping Blade	13418	0.34646	8.80	-
ED-8.9 Stripping Blade	08977	0.35039	8.90	-
ED-9.0 Stripping Blade	22089	0.35433	9.00	-
ED-9.1 Stripping Blade	08966	0.35827	9.10	-
ED-9.2 Stripping Blade	17992	0.36220	9.20	-
ED-9.3 Stripping Blade	23032	0.36614	9.30	-
ED-9.4 Stripping Blade	16570	0.37008	9.40	-
ED-9.5 Stripping Blade	23033	0.37402	9.50	-
ED-9.6 Stripping Blade	09143	0.37795	9.60	-
ED-9.7 Stripping Blade	17496	0.38189	9.70	-
ED-9.8 Stripping Blade	16571	0.38583	9.80	-
ED-9.9 Stripping Blade	23034	0.38976	9.90	-
ED-10.0 Stripping Blade	23035	0.39370	10.00	-
ED-10.1 Stripping Blade	23036	0.39764	10.10	-
ED-10.2 Stripping Blade	09141	0.40157	10.20	-
ED-10.3 Stripping Blade	23037	0.40551	10.30	-
ED-10.4 Stripping Blade	19861	0.40945	10.40	-
ED-10.5 Stripping Blade	19862	0.41339	10.50	-
ED-10.6 Stripping Blade	09142	0.41732	10.60	-
ED-10.7 Stripping Blade	23038	0.42126	10.70	-
ED-10.8 Stripping Blade	23039	0.42520	10.80	-



EDC Cut-off Blades

Mechtrix Description	Mechtrix Part Number	Blade Form Diameter		OEM Part Number
		(in)	(mm)	
EDC	04379	-	-	00169

A complete set of ED/EDC/EDG tooling consists of four (4) ED Strip Blades, two (2) EDC Cut-off Blades and four (4) EDG Wire Guides.

Mechtrix "ED" Stripping Blades are covered by U.S. Pat. 4,630,406



Mechtrix Corporation • W147 N9461 Held Drive • Menomonee Falls, WI 53051
Tel (262) 255-6555 • Fax (262) 255-2628 • www.mechtrix.com

Eubanks Tooling

Used In These
Machines

Eubanks

1000
2600
2670
2700
2750
2800
2900
4000



To select the proper "EDG" Guide for your "ED" Blades simply find the "Guide Form Diameter" which is equal to or the next size larger than the maximum measured insulation diameter.

EDG Wire Guides

Mechtrix Description	Mechtrix Part Number	Guide Form Diameter		OEM Part Number
		(in)	(mm)	
EDG-0.5 Wire Guide	20671	0.01969	0.50	-
EDG-0.6 Wire Guide	08461	0.02362	0.60	-
EDG-0.7 Wire Guide	08222	0.02756	0.70	-
EDG-0.8 Wire Guide	16097	0.03150	0.80	-
EDG-0.9 Wire Guide	09693	0.03543	0.90	-
EDG-1.0 Wire Guide	08462	0.03937	1.00	-
EDG-1.1 Wire Guide	11202	0.04331	1.10	-
EDG-1.2 Wire Guide	11170	0.04724	1.20	-
EDG-1.3 Wire Guide	14240	0.05118	1.30	-
EDG-1.4 Wire Guide	09473	0.05512	1.40	-
EDG-1.5 Wire Guide	08913	0.05906	1.50	-
EDG-1.6 Wire Guide	08465	0.06299	1.60	-
EDG-1.7 Wire Guide	07898	0.06693	1.70	-
EDG-1.8 Wire Guide	08527	0.07087	1.80	-
EDG-1.9 Wire Guide	08528	0.07480	1.90	-
EDG-2.0 Wire Guide	07845	0.07874	2.00	-
EDG-2.1 Wire Guide	08529	0.08268	2.10	-
EDG-2.2 Wire Guide	08530	0.08661	2.20	-
EDG-2.3 Wire Guide	08531	0.09055	2.30	-
EDG-2.4 Wire Guide	08532	0.09449	2.40	-
EDG-2.5 Wire Guide	14421	0.09843	2.50	-
EDG-2.6 Wire Guide	12364	0.10236	2.60	-
EDG-2.7 Wire Guide	08533	0.10630	2.70	-
EDG-2.8 Wire Guide	08534	0.11024	2.80	-
EDG-2.9 Wire Guide	08535	0.11417	2.90	-
EDG-3.0 Wire Guide	08536	0.11811	3.00	-
EDG-3.1 Wire Guide	08537	0.12205	3.10	-
EDG-3.2 Wire Guide	08538	0.12598	3.20	-
EDG-3.3 Wire Guide	13660	0.12992	3.30	-
EDG-3.4 Wire Guide	09745	0.13386	3.40	-
EDG-3.5 Wire Guide	09746	0.13780	3.50	-
EDG-3.6 Wire Guide	07894	0.14173	3.60	-
EDG-3.7 Wire Guide	09747	0.14567	3.70	-
EDG-3.8 Wire Guide	20087	0.14961	3.80	-
EDG-3.9 Wire Guide	12319	0.15354	3.90	-
EDG-4.0 Wire Guide	15813	0.15748	4.00	-
EDG-4.1 Wire Guide	08419	0.16142	4.10	-
EDG-4.2 Wire Guide	10323	0.16535	4.20	-
EDG-4.3 Wire Guide	12798	0.16929	4.30	-
EDG-4.4 Wire Guide	09783	0.17323	4.40	-

* Please note that the Model 3751 and Model 4850 Machines each require special Wire Guides and cannot use the standard EDG Wire Guides listed above.



Mechtrix Corporation • W147 N9461 Held Drive • Menomonee Falls, WI 53051
Tel (262) 255-6555 • Fax (262) 255-2628 • www.mechtrix.com

Eubanks Tooling

Used In These
Machines

Eubanks
1000
2600
2670
2700
2750
2800
2900
4000



EDG Wire Guides (continued)

Mechtrix Description	Mechtrix Part Number	Guide Form Diameter		OEM Part Number
		(in)	(mm)	
EDG-4.5 Wire Guide	11248	0.17717	4.50	-
EDG-4.6 Wire Guide	08424	0.18110	4.60	-
EDG-4.7 Wire Guide	14661	0.18504	4.70	-
EDG-4.8 Wire Guide	14000	0.18898	4.80	-
EDG-4.9 Wire Guide	11410	0.19291	4.90	-
EDG-5.0 Wire Guide	09153	0.19685	5.00	-
EDG-5.1 Wire Guide	16922	0.20079	5.10	-
EDG-5.2 Wire Guide	12315	0.20472	5.20	-
EDG-5.3 Wire Guide	12345	0.20866	5.30	-
EDG-5.4 Wire Guide	08657	0.21260	5.40	-
EDG-5.5 Wire Guide	14238	0.21654	5.50	-
EDG-5.6 Wire Guide	08656	0.22047	5.60	-
EDG-5.7 Wire Guide	14443	0.22441	5.70	-
EDG-5.8 Wire Guide	13865	0.22835	5.80	-
EDG-5.9 Wire Guide	13230	0.23228	5.90	-
EDG-6.0 Wire Guide	09722	0.23622	6.00	-
EDG-6.1 Wire Guide	16656	0.24016	6.10	-
EDG-6.2 Wire Guide	12321	0.24409	6.20	-
EDG-6.3 Wire Guide	08036	0.24803	6.30	-
EDG-6.4 Wire Guide	08345	0.25197	6.40	-
EDG-6.5 Wire Guide	13667	0.25591	6.50	-
EDG-6.6 Wire Guide	09500	0.25984	6.60	-
EDG-6.7 Wire Guide	12057	0.26378	6.70	-
EDG-6.8 Wire Guide	08235	0.26772	6.80	-
EDG-6.9 Wire Guide	08587	0.27165	6.90	-
EDG-7.0 Wire Guide	08549	0.27559	7.00	-
EDG-7.1 Wire Guide	14531	0.27953	7.10	-
EDG-7.2 Wire Guide	09149	0.28346	7.20	-
EDG-7.3 Wire Guide	08358	0.28740	7.30	-
EDG-7.4 Wire Guide	08420	0.29134	7.40	-
EDG-7.5 Wire Guide	19383	0.29528	7.50	-
EDG-7.6 Wire Guide	10546	0.29921	7.60	-
EDG-7.7 Wire Guide	09782	0.30315	7.70	-
EDG-7.8 Wire Guide	14078	0.30709	7.80	-
EDG-7.9 Wire Guide	08553	0.31102	7.90	-
EDG-8.0 Wire Guide	09375	0.31496	8.00	-
EDG-8.1 Wire Guide	12817	0.31890	8.10	-
EDG-8.2 Wire Guide	09146	0.32283	8.20	-
EDG-8.3 Wire Guide	13491	0.32677	8.30	-
EDG-8.4 Wire Guide	09501	0.33071	8.40	-
EDG-8.5 Wire Guide	08634	0.33465	8.50	-
EDG-8.6 Wire Guide	11189	0.33858	8.60	-
EDG-8.7 Wire Guide	13545	0.34252	8.70	-
EDG-8.8 Wire Guide	20320	0.34646	8.80	-

* Please note that the Model 3751 and Model 4850 Machines each require special Wire Guides and cannot use the standard EDG Wire Guides listed above.

Eubanks Tooling

Used In These
Machines

Eubanks

1000
2600
2670
2700
2750
2800
2900
4000



EDG Wire Guides (continued)

Mechtrix Description	Mechtrix Part Number	Guide Form Diameter		OEM Part Number
		(in)	(mm)	
EDG-8.9 Wire Guide	09630	0.35039	8.90	-
EDG-9.0 Wire Guide	08287	0.35433	9.00	-
EDG-9.1 Wire Guide	08378	0.35827	9.10	-
EDG-9.2 Wire Guide	08550	0.36220	9.20	-
EDG-9.3 Wire Guide	12001	0.36614	9.30	-
EDG-9.4 Wire Guide	15962	0.37008	9.40	-
EDG-9.5 Wire Guide	23641	0.37402	9.50	-
EDG-9.6 Wire Guide	08322	0.37795	9.60	-
EDG-9.7 Wire Guide	09428	0.38189	9.70	-
EDG-9.8 Wire Guide	16508	0.38583	9.80	-
EDG-9.9 Wire Guide	08785	0.38976	9.90	-
EDG-10.0 Wire Guide	08359	0.39370	10.00	-
EDG-10.1 Wire Guide	12306	0.39764	10.10	-
EDG-10.2 Wire Guide	08518	0.40157	10.20	-
EDG-10.3 Wire Guide	17695	0.40551	10.30	-
EDG-10.4 Wire Guide	17693	0.40945	10.40	-
EDG-10.5 Wire Guide	12344	0.41339	10.50	-
EDG-10.6 Wire Guide	07782	0.41732	10.60	-
EDG-10.7 Wire Guide	08658	0.42126	10.70	-
EDG-10.8 Wire Guide	15402	0.42520	10.80	-
EDG-10.9 Wire Guide	11047	0.42913	10.90	-

* Please note that the Model 3751 and Model 4850 Machines each require special Wire Guides and cannot use the standard EDG Wire Guides listed above.

A complete set of ED/EDC/EDG tooling consists of four (4) ED Strip Blades, two (2) EDC Cut-off Blades and four (4) EDG Wire Guides.